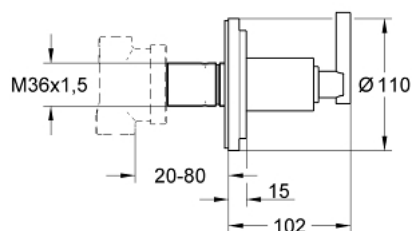


## 19 134 000 **ATRIO 5-WAY DIVERTER**

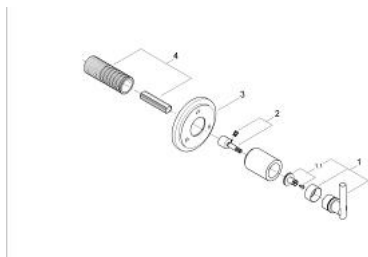


### PRODUCT DESCRIPTION

- Colour: chrome
- final installation set for 29 708 000
- without concealed body
- GROHE Long-Life finish
- screw flange
- screwable
- with Jota handle



## 19 134 000 **ATRIO 5-WAY DIVERTER**



### **SPARE PARTS**, January 2000 – now

1: Handle Jota (Order-nr. 45609000)

1.1: Replacement handle connection kit (Order-nr. 45605000)

2: Extension (Order-nr. 45611000)

3: Escutcheon (Order-nr. 45613000)

4: Extension (Order-nr. 45439000)