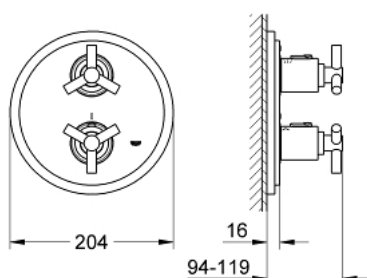


19 395 000 **ATRIO THERMOSTAT WITH INTEGRATED 2-WAY DIVERTER FOR BATH OR SHOWER WITH MORE THAN ONE OUTLET**

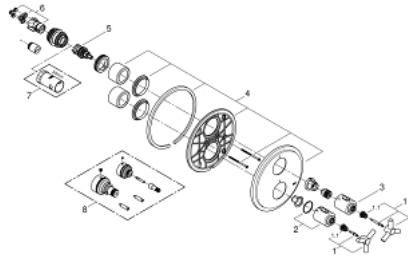


PRODUCT DESCRIPTION

- Colour: chrome
- set for final installation for
- GROHE Rapido T 35 500 000
- without concealed body
- GROHE LongLife finish
- GROHE SafeStop safety button at 38°C
- Aquadimmer with multiple function
- shut off and flow control
- diverter for 2 outlets
- escutcheon and shaft sealing
- wall escutcheon
- covered fixing
- with Ypsilon handle



19 395 000 ATRIO THERMOSTAT WITH INTEGRATED 2-WAY DIVERTER FOR BATH OR SHOWER WITH MORE THAN ONE OUTLET



SPARE PARTS, 4月 2014 – now

- 1: Handle Atrio Ypsilon (Spare part-nr. 47289000)
 - 1.1: Snap insert (Spare part-nr. 08943000)
 - 2: Temperature scale handle (Spare part-nr. 06676000)
 - 3: Handle for shut-off valve (Spare part-nr. 06654000)
 - 4: Escutcheon (Spare part-nr. 47326000)
 - 5: Aquadimmer (Spare part-nr. 47364000)
 - 6: Adapter (Spare part-nr. 12701000)
 - 7: Socket spanner (Spare part-nr. 19332000)*
 - 8: Extension set 27.5 mm (Spare part-nr. 47781000)*
- * Optional accessories