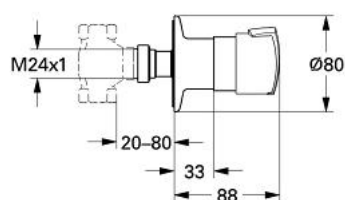


## 19 847 IP0 ECTOS CONCEALED VALVE EXPOSED PART

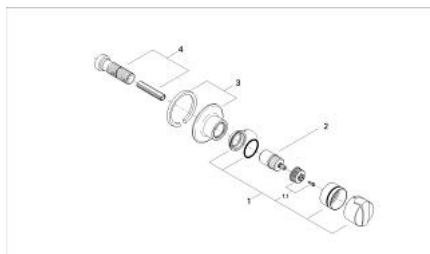


### PRODUCT DESCRIPTION

- Colour: chrome/matt chrome
- installation depth adjustable
- from 20-80 mm
- for concealed valves, 1/2", 3/4", 1"
- screw flange
- screwable



## 19 847 IP0 **ECTOS CONCEALED VALVE EXPOSED PART**



### **SPARE PARTS**, January 1999 – now

1: Handle for shut-off valve (Order-nr. 47062IP0)

1.1: Repl. kit f.handle fastening (Order-nr. 45892000)

2: Extension (Order-nr. 45204000)

3: Escutcheon (Order-nr. 47523000)

4: Extension 20-80 (Order-nr. 45202000)