

19 855 001 **COSTA L CONCEALED VALVE EXPOSED PART**

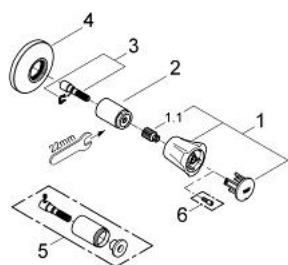


PRODUCT DESCRIPTION

- Colour: chrome
- for concealed valves, 1/2", 3/4", 1"
- installation depth adjustable
- 10 - 35 mm
- metal handle
- heat-insulated
- marking: red
- escutcheon
- GROHE Long-Life finish



19 855 001 **COSTA L CONCEALED VALVE EXPOSED PART**



SPARE PARTS, June 2007 – now

- 1: Handle (Order-nr. 45994000)
- 1.1: Repl. kit f.handle fastening (Order-nr. 0538600M)
- 2: Sleeve (Order-nr. 06688000)
- 3: Extension (Order-nr. 45201000)
- 3.1: Safety clip (Order-nr. 0256900M)
- 4: Escutcheon (Order-nr. 06386000)
- 5: Extension for volume control (Order-nr. 45565000)*
- 6: Screw for Costa/Avina products (Order-nr. 48013000)*

* Optional accessories