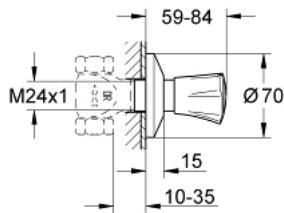


19 855 001 **COSTA L CONCEALED VALVE EXPOSED PART**

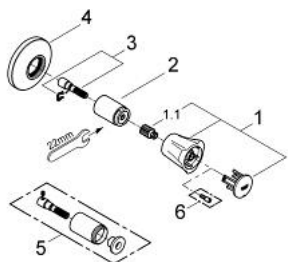


PRODUCT DESCRIPTION

- Colour: chrome
- for GROHE concealed valves, 1/2", 3/4", 1"
- installation depth infinitely adjustable
- 10 - 35 mm
- metal handle
- heat insulated
- marking: red
- sliding escutcheon
- GROHE Long-Life finish



19 855 001 **COSTA L CONCEALED VALVE EXPOSED PART**



SPARE PARTS, 6月 2007 – now

1: Handle (Order-nr. 45994000)

1.1: Snap insert (Order-nr. 0538600M)

2: Sleeve 1/2" (Order-nr. 06688000)

3: Extension for spindle (Order-nr. 45201000)

3.1: Clip (Order-nr. 0256900M)

4: Escutcheon (Order-nr. 06386000)

5: Extension for volume control (Order-nr. 45565000)*

6: Screw for Costa/Avina products (Order-nr. 48013000)*

* Optional accessories