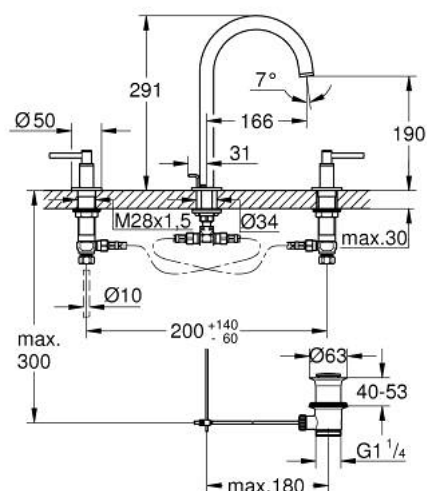
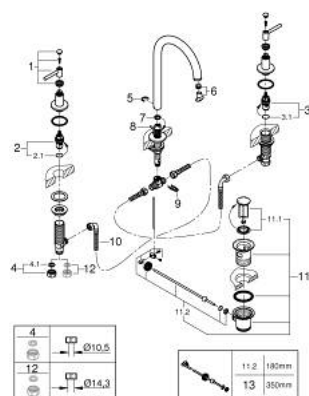


A modern, minimalist kitchen faucet with a high, curved spout and two side handles, set against a white background. The faucet is made of polished metal, likely stainless steel, and has a sleek, cylindrical design. The spout is tall and arches over, while the handles are positioned on either side of the base, each with a horizontal lever. The overall aesthetic is clean and contemporary.

- Colour: Supersteel
- ceramic headparts 1/2", 90°
- GROHE Long-Life finish
- GROHE Water Saving 5.7 l/min laminar mousseur
- swivelling tubular spout with Mousseur and stop limiter
- pop-up waste set 1 1/4"
- flexible connection hoses between spout and side valves
- with lever handles
- Two different sets of caps included. One set with "H" and "C" marking, one set without marking.



20 009 DC3 **ATRIO 3-HOLE BASIN MIXER** **M-SIZE**



SPARE PARTS, April 2017 – now

- 1: Lever handles (Order-nr. 18027DC3)
- 2: Ceramic headpart, 1/2" (Order-nr. 45882000)
- 2.1: O-ring $\varnothing 18.2 \times \varnothing 1.7$ (Order-nr. 0392400M)
- 3: Ceramic headpart, 1/2" (Order-nr. 45883000)
- 3.1: O-ring $\varnothing 18.2 \times \varnothing 1.7$ (Order-nr. 0392400M)
- 4: Coupling nut 1/2" x 10.5 mm (Order-nr. 1290100M)
- 4.1: Fibre seal dia. 12x2 mm (Order-nr. 0138900M)
- 5: Safety ring (Order-nr. 4826600M)
- 6: Flow straightener (Order-nr. 48408000)
- 7: Sealing washer (Order-nr. 0128500M)
- 8: Pop-up rod (Order-nr. 65196EN0)
- 9: Fixing clamp (Order-nr. 6554100M)
- 10: Flexible connection hose (Order-nr. 45704000)
- 11: Pop-up waste set 1 1/4" (Order-nr. 28910DC0)
- 11.1: Plug (Order-nr. 07182DC0)
- 11.2: Eccentric rod (Order-nr. 07052000)
- 12: Coupling nut 1/2" x 14.5 mm (Order-nr. 1290200M)*
- 13: Eccentric rod (Order-nr. 07341000)*

* Optional accessories