

20 124 000 **KENSINGTON THREE-HOLE BASIN MIXER 1/2"**

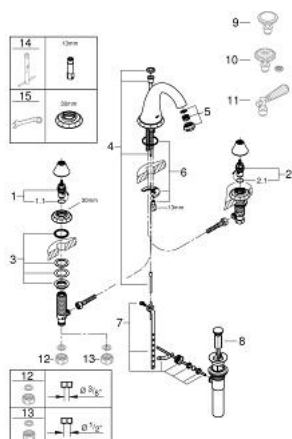


PRODUCT DESCRIPTION

- Colour: chrome
- without handles
- mousseur
- side valves
- ceramic headparts 1/2", 90°
- pop-up waste set 1 1/4"
- pressure-proof flexible connection hoses between spout and side valves
- GROHE Long-Life finish
- round handles 18 086 000 & 18 086 EN0 (sold separately)
- Swarovski crystal handles 18 086 VP0 (sold separately)
- lever handles 18 087 000 & 18 087 EN0 (sold separately)

20 124 000 KENSINGTON THREE-HOLE BASIN MIXER 1/2"

SPARE PARTS, 3月 2016 – now



1: Ceramic headpart 1/2" (Order-nr. 45882000)

1.1: O-ring Ø 18.2 x Ø 1.7 (Order-nr. 0392400M)

2: Ceramic headpart 1/2" (Order-nr. 45883000)

2.1: O-ring Ø 18.2 x Ø 1.7 (Order-nr. 0392400M)

3: Counter screws M28 x 1.5 (Order-nr. 45025000)

4: Pop-up rod (Order-nr. 45875000)

5: Sistra (Order-nr. 13990000)

6: Shank mounting kit (Order-nr. 46249000)

7: Ball rod (Order-nr. 48332000)

8: Plug (Order-nr. 48331000)

9: Round handle (Order-nr. 18086000)*

10: Round handle (Order-nr. 18086VP0)*

11: Lever handle (Order-nr. 18087000)*

12: Coupling nut 1/2" (Order-nr. 1290100M)*

13: Coupling nut 1/2" x 14.5 mm (Order-nr. 1290200M)*

14: Mounting wrench (Order-nr. 19017000)*

15: Special spanner (Order-nr. 19377000)*

* Optional accessories