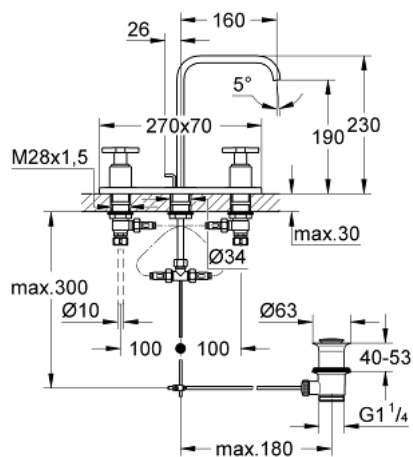


20 143 000 **ALLURE THREE-HOLE BASIN MIXER 1/2"**
M-SIZE

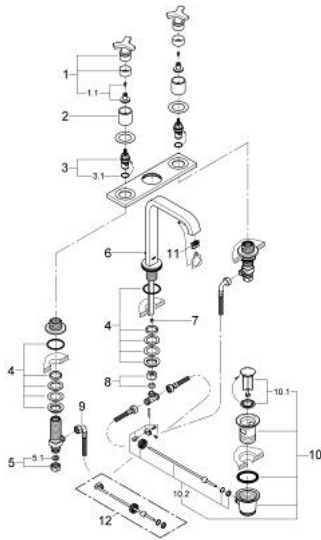


PRODUCT DESCRIPTION

- Colour: chrome
- with metal plate
- GROHE LongLife finish
- Carbodur ceramic headpart 1/2", 180°
- flow limiter 8 l/min.
- spout with mousseur
- pop-up waste set 1 1/4"
- pressure-proof flexible connection hoses between spout and side valves
- min. recommended pressure 1.0 bar



20 143 000 **ALLURE THREE-HOLE BASIN MIXER 1/2"**
M-SIZE



SPARE PARTS, 8月 2008 – now

- 1: Handle (Spare part-nr. 46611000)
 - 1.1: Replacement handle connection kit (Spare part-nr. 45605000)
 - 2: Sleeve (Spare part-nr. 08124000)
 - 3: Ceramic headpart 1/2" (Spare part-nr. 45346000)
 - 3.1: O-ring Ø 18.2 x Ø 1.7 (Spare part-nr. 0392400M)
 - 4: Counter screws M28 x 1.5 (Spare part-nr. 45025000)
 - 5: Coupling nut 1/2" (Spare part-nr. 1290100M)
 - 5.1: Fibre seal Ø 18,5 x Ø 12 x 2 (Spare part-nr. 0138900M)
 - 6: Pop-up rod (Spare part-nr. 65196000)
 - 7: Flow limiter (Spare part-nr. 46324000)
 - 8: Compression union 3/8" (Spare part-nr. 12914000)
 - 9: Flexible connection hose (Spare part-nr. 45704000)
 - 10: Waste set 1 1/4" (Spare part-nr. 28910000)
 - 10.1: Plug (Spare part-nr. 07182000)
 - 10.2: Eccentric rod (Spare part-nr. 07052000)
 - 11: Mousseur (Spare part-nr. 13220000)
 - 12: Eccentric rod (Spare part-nr. 07341000)*
- * Optional accessories