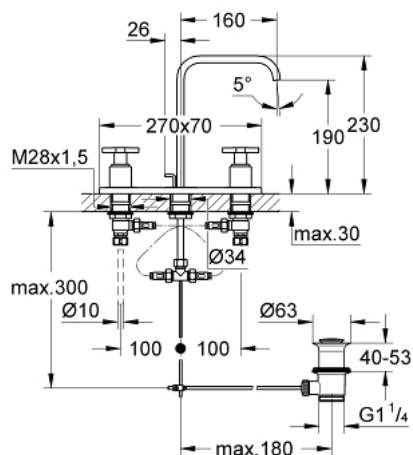


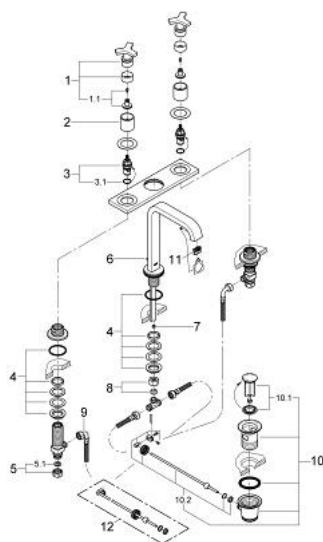
## 20 143 000 **ALLURE THREE-HOLE BASIN MIXER 1/2"** **M-SIZE**



### PRODUCT DESCRIPTION

- Colour: chrome
- with metal plate
- GROHE Long-Life finish
- Carbodur ceramic headpart 1/2", 180°
- flow limiter 8 l/min.
- spout with mousseur
- pop-up waste set 1 1/4"
- pressure-proof flexible connection hoses between spout and side valves
- min. recommended pressure 1.0 bar

## 20 143 000 ALLURE THREE-HOLE BASIN MIXER 1/2" M-SIZE



### SPARE PARTS, 8月 2008 – now

- 1: Handle (Order-nr. 46611000)
  - 1.1: Replacement handle connection kit (Order-nr. 45605000)
  - 2: Sleeve (Order-nr. 08124000)
  - 3: Ceramic headpart 1/2" (Order-nr. 45346000)
  - 3.1: O-ring Ø 18.2 x Ø 1.7 (Order-nr. 0392400M)
  - 4: Counter screws M28 x 1.5 (Order-nr. 45025000)
  - 5: Coupling nut 1/2" (Order-nr. 1290100M)
  - 5.1: Fibre seal Ø 18,5 x Ø 12 x 2 (Order-nr. 0138900M)
  - 6: Pop-up rod (Order-nr. 65196000)
  - 7: Flow limiter (Order-nr. 46324000)
  - 8: Compression union 3/8" (Order-nr. 12914000)
  - 9: Flexible connection hose (Order-nr. 45704000)
  - 10: Waste set 1 1/4" (Order-nr. 28910000)
  - 10.1: Plug (Order-nr. 07182000)
  - 10.2: Eccentric rod (Order-nr. 07052000)
  - 11: Mousseur (Order-nr. 13220000)
  - 12: Eccentric rod (Order-nr. 07341000)\*
- \* Optional accessories