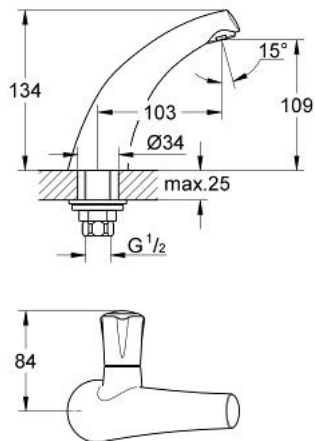


## 20 159 000 AVINA PILLAR TAP

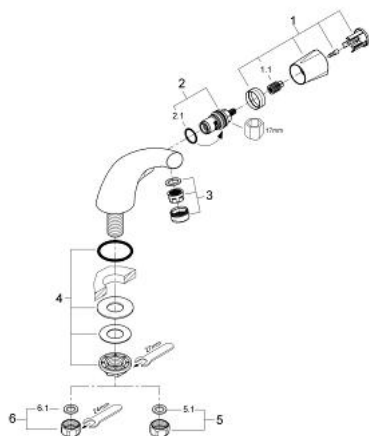


### PRODUCT DESCRIPTION

- Colour: chrome
- metal handle
- heat-insulated
- screwable
- marking: blue
- Carbodur headpart
- cast spout with mousseur
- union nut 1/2" with 10,5 mm-bore
- GROHE Long-Life finish



## 20 159 000 AVINA PILLAR TAP



### SPARE PARTS, June 2007 – now

- 1: handle Atlanta (Order-nr. 45993000)
- 1.1: Repl. kit f.handle fastening (Order-nr. 0538600M)
- 2: Ceramic headpart, 1/2" (Order-nr. 45346000)
- 2.1: O-ring  $\varnothing 18.2 \times \varnothing 1.7$  (Order-nr. 0392400M)
- 3: Mousseur (Order-nr. 13929000)
- 4: Shank mounting kit (Order-nr. 45004000)
- 5: Coupling nut 1/2" x 14.5 mm (Order-nr. 1290200M)
- 5.1: Fibre seal dia. 12x2 mm (Order-nr. 0138900M)
- 6: Coupling nut 1/2" x 10.5 mm (Order-nr. 1290100M)
- 6.1: Fibre seal dia. 12x2 mm (Order-nr. 0138900M)