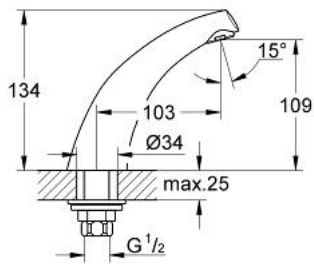


20 159 000 **AVINA PILLAR TAP 1/2"**

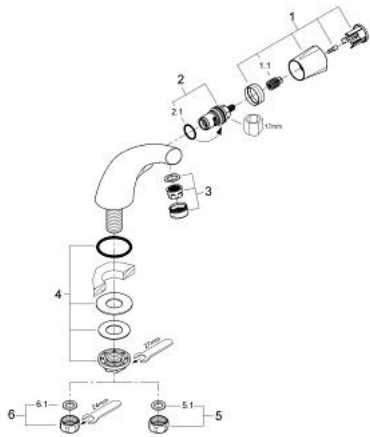


PRODUCT DESCRIPTION

- Colour: chrome
- metal handle
- heat insulated
- screwable
- marking: blue
- Carbodur headpart
- cast spout with mousseur
- union nut 1/2" with 10.5 mm drilling
- GROHE LongLife finish



20 159 000 AVINA PILLAR TAP 1/2"



SPARE PARTS, 6月 2007 – now

- 1: Handle Atlanta (Spare part-nr. 45993000)
- 1.1: Snap insert (Spare part-nr. 0538600M)
- 2: Ceramic headpart 1/2" (Spare part-nr. 45346000)
- 2.1: O-ring Ø 18.2 x Ø 1.7 (Spare part-nr. 0392400M)
- 3: Mousseur (Spare part-nr. 13929000)
- 4: Shank mounting kit (Spare part-nr. 45004000)
- 5: Coupling nut 1/2" x 14.5 mm (Spare part-nr. 1290200M)
- 5.1: Fibre seal Ø 18,5 x Ø 12 x 2 (Spare part-nr. 0138900M)
- 6: Coupling nut 1/2" (Spare part-nr. 1290100M)
- 6.1: Fibre seal Ø 18,5 x Ø 12 x 2 (Spare part-nr. 0138900M)