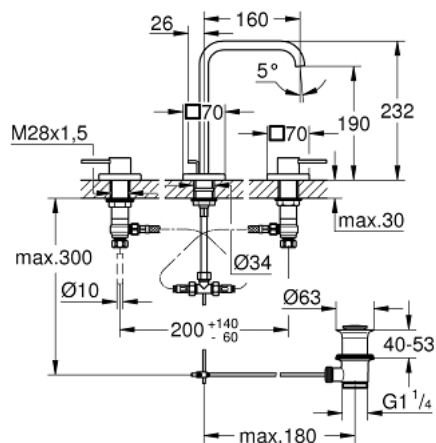


20 188 000 **ALLURE THREE-HOLE BASIN MIXER 1/2"** **M-SIZE**

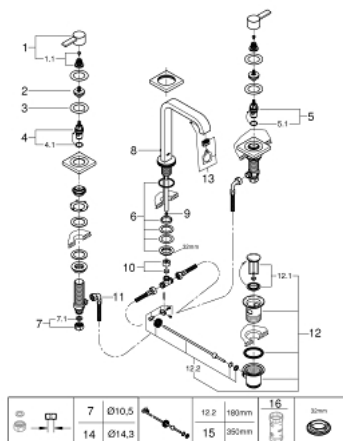


PRODUCT DESCRIPTION

- Colour: chrome
- with lever handles
- separate escutcheons made of metal
- ceramic headparts 1/2", 90°
- GROHE Long-Life finish
- flow limiter 8 l/min.
- spout with mousseur
- pressure-proof flexible connection hoses between spout and side valves
- pop-up waste set 1 1/4"



20 188 000 ALLURE THREE-HOLE BASIN MIXER 1/2" M-SIZE



SPARE PARTS, 8月 2018 – now

- 1: Handle (Order-nr. 48043000)
 - 1.1: Replacement handle connection kit (Order-nr. 45186000)
 - 1.1.1: O-ring Ø 18.2 x Ø 1.7 (Order-nr. 0392400M)
 - 2: Extension for spindle (Order-nr. 48045000)
 - 3: Sealing washer (Order-nr. 48047000)
 - 4: Ceramic headpart 1/2" (Order-nr. 45882000)
 - 4.1: O-ring Ø 18.2 x Ø 1.7 (Order-nr. 0392400M)
 - 5: Ceramic headpart 1/2" (Order-nr. 45883000)
 - 5.1: O-ring Ø 18.2 x Ø 1.7 (Order-nr. 0392400M)
 - 6: Counter screws M28 x 1.5 (Order-nr. 45025000)
 - 7: Coupling nut 1/2" (Order-nr. 1290100M)
 - 7.1: Fibre seal Ø 18,5 x Ø 12 x 2 (Order-nr. 0138900M)
 - 8: Pop-up rod (Order-nr. 65196000)
 - 9: Flow limiter (Order-nr. 46324000)
 - 10: Compression union 3/8" (Order-nr. 12914000)
 - 11: Flexible connection hose (Order-nr. 45704000)
 - 12: Waste set 1 1/4" (Order-nr. 28910000)
 - 12.1: Plug (Order-nr. 07182000)
 - 12.2: Eccentric rod (Order-nr. 07052000)
 - 13: Mousseur (Order-nr. 13220000)
 - 14: Coupling nut 1/2" x 14.5 mm (Order-nr. 1290200M)*
 - 15: Eccentric rod (Order-nr. 07341000)*
 - 16: Socket spanner (Order-nr. 19332000)*
- * Optional accessories