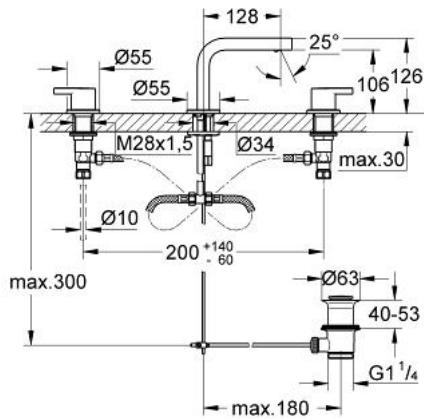


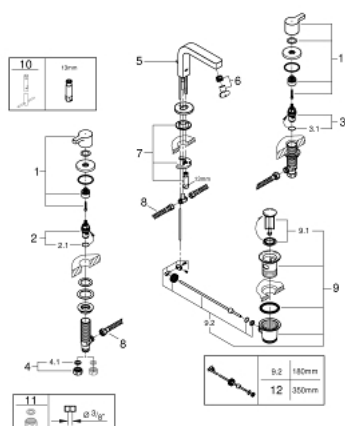
20 304 000 **LINEARE_ 3-HOLE BASIN MIXER S-SIZE**



PRODUCT DESCRIPTION

- Colour: chrome
- ceramic headparts 1/2", 90°
- GROHE Long-Life finish
- GROHE FastFixation installation system
- pop-up waste set 1 1/4"
- pressure-proof flexible connection hoses between spout and side valves

20 304 000 LINEARE_ 3-HOLE BASIN MIXER S-SIZE



SPARE PARTS, 5月 2017 – now

- 1: Handle pair (Order-nr. 48316000)
- 2: Ceramic headpart 1/2" (Order-nr. 45882000)
- 2.1: O-ring Ø 18.2 x Ø 1.7 (Order-nr. 0392400M)
- 3: Ceramic headpart 1/2" (Order-nr. 45883000)
- 3.1: O-ring Ø 18.2 x Ø 1.7 (Order-nr. 0392400M)
- 4: Coupling nut 1/2" x 14.5 mm (Order-nr. 1290200M)
- 4.1: Fibre seal Ø 18,5 x Ø 12 x 2 (Order-nr. 0138900M)
- 5: Pop-up rod (Order-nr. 65196000)
- 6: Mousseur (Order-nr. 13994000)
- 7: Shank mounting kit (Order-nr. 46671000)
- 8: Flexible hose (Order-nr. 45442000)
- 9: Waste set 1 1/4" (Order-nr. 28910000)
- 9.1: Plug (Order-nr. 07182000)
- 9.2: Eccentric rod (Order-nr. 07052000)
- 10: Mounting wrench (Order-nr. 19017000)*
- 11: Coupling nut 1/2" (Order-nr. 1290100M)*
- 12: Eccentric rod (Order-nr. 07341000)*

* Optional accessories