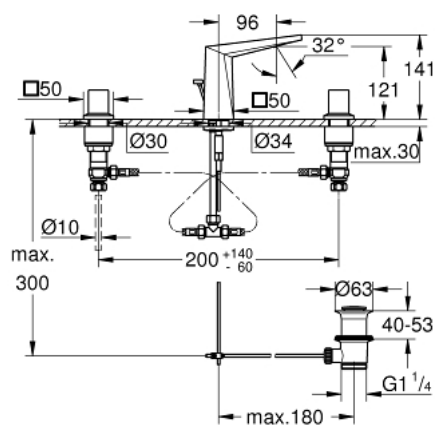


20 342 000 **ALLURE BRILLIANT 3-HOLE BASIN MIXER S-SIZE**

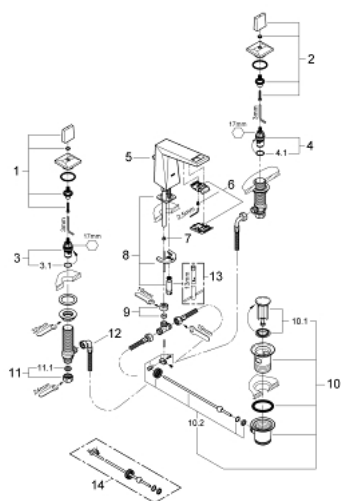


## PRODUCT DESCRIPTION

- Colour: chrome
- ceramic headparts 1/2", 90°
- GROHE Water Saving 5.0 l/min flow limiter
- low spout with integrated mousseur
- pop-up waste set 1 1/4"
- pressure-proof flexible connection hoses between spout and side valves
- min. recommended pressure 1.0 bar



## 20 342 000 **ALLURE BRILLIANT 3-HOLE BASIN MIXER S-SIZE**



### SPARE PARTS, 8月 2010 – now

- 1: Allure Brilliant handle red (Order-nr. 48129000)
  - 2: Allure Brilliant handle blue (Order-nr. 48130000)
  - 3: Ceramic headpart 1/2" (Order-nr. 45882000)
  - 3.1: O-ring Ø 18.2 x Ø 1.7 (Order-nr. 0392400M)
  - 4: Ceramic headpart 1/2" (Order-nr. 45883000)
  - 4.1: O-ring Ø 18.2 x Ø 1.7 (Order-nr. 0392400M)
  - 5: Pop-up rod (Order-nr. 46787000)
  - 6: Race (Order-nr. 46794000)
  - 7: Flow limiter (Order-nr. 48160000)
  - 8: Shank mounting kit (Order-nr. 46671000)
  - 9: Compression union 3/8" (Order-nr. 12914000)
  - 10: Waste set 1 1/4" (Order-nr. 28910000)
  - 10.1: Plug (Order-nr. 07182000)
  - 10.2: Eccentric rod (Order-nr. 07052000)
  - 11: Coupling nut 1/2" (Order-nr. 1290100M)
  - 11.1: Fibre seal Ø 18,5 x Ø 12 x 2 (Order-nr. 0138900M)
  - 12: Flexible connection hose (Order-nr. 45704000)
  - 13: Mounting wrench (Order-nr. 19017000)\*
  - 14: Eccentric rod (Order-nr. 07341000)\*
- \* Optional accessories