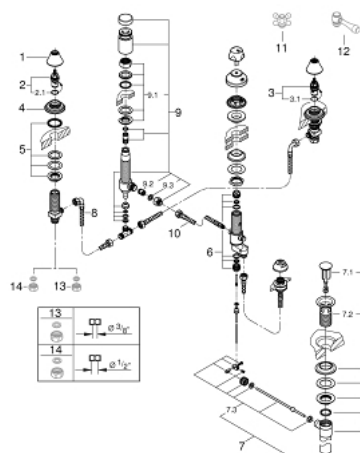


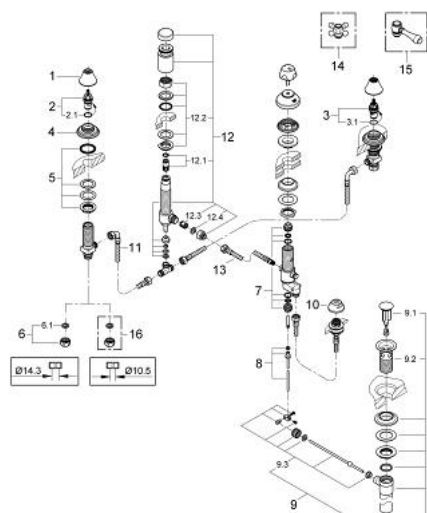
24 019 BE0 GENEVA 3-HOLE BIDET MIXER



SPARE PARTS, August 2016 – now

- 1: Shield (Order-nr. 45907BE0)
 - 2: Ceramic headpart, 1/2" (Order-nr. 45882000)
 - 2.1: O-ring $\varnothing 18.2 \times \varnothing 1.7$ (Order-nr. 0392400M)
 - 3: Ceramic headpart, 1/2" (Order-nr. 45883000)
 - 3.1: O-ring $\varnothing 18.2 \times \varnothing 1.7$ (Order-nr. 0392400M)
 - 4: Escutcheon (Order-nr. 45906BE0)
 - 5: Shank fastening assembly (Order-nr. 45025000)
 - 6: Repl. kit f. seal (Order-nr. 45027000)
 - 7: Pop-up waste set (Order-nr. 28957BE0)
 - 7.1: Plug (Order-nr. 45324BE0)
 - 7.2: Housing (Order-nr. 01153BE0)
 - 7.3: Ball rod (Order-nr. 45264000)
 - 8: Flexible connection hose (Order-nr. 45704000)
 - 9: Vacuum Breaker (Order-nr. 45852BE0)
 - 9.1: Shank mounting kit (Order-nr. 45855000)
 - 9.2: Non-return valve (Order-nr. 08565000)
 - 9.3: Fibre seal dia. 12x2 mm (Order-nr. 0138900M)
 - 10: Flexible connector M10x1xM15x1x350 (Order-nr. 46254000)
 - 11: Sinfonia cross handles (Order-nr. 18733BE0)*
 - 12: Lever Handle (Order-nr. 18734BE0)*
 - 13: Coupling nut 1/2" x 10.5 mm (Order-nr. 1290100M)*
 - 14: Coupling nut 1/2" x 14.5 mm (Order-nr. 1290200M)*
- * Optional accessories

24 019 BE0 GENEVA 3-HOLE BIDET MIXER

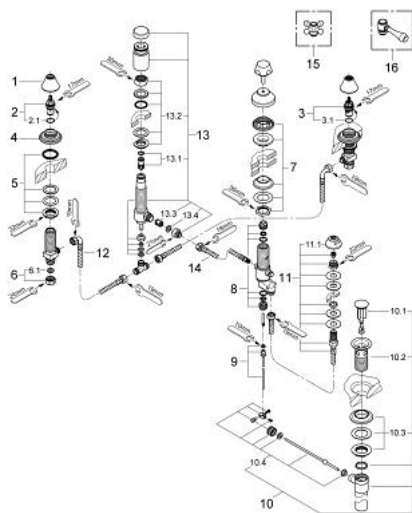


SPARE PARTS, December 2013 – August 2016

- 1: Shield (Order-nr. 45907BE0)
- 2: Ceramic headpart, 1/2" (Order-nr. 45882000)
- 2.1: O-ring $\varnothing 18.2 \times \varnothing 1.7$ (Order-nr. 0392400M)
- 3: Ceramic headpart, 1/2" (Order-nr. 45883000)
- 3.1: O-ring $\varnothing 18.2 \times \varnothing 1.7$ (Order-nr. 0392400M)
- 4: Escutcheon (Order-nr. 45906BE0)
- 5: Shank fastening assembly (Order-nr. 45025000)
- 6: Coupling nut 1/2" x 14.5 mm (Order-nr. 1290200M)
- 6.1: Fibre seal dia. 12x2 mm (Order-nr. 0138900M)
- 7: Repl. kit f. seal (Order-nr. 45027000)
- 8: Swivel vertical pop-up rod (Order-nr. 45646000)
- 9: Pop-up waste set (Order-nr. 28957BE0)
- 9.1: Plug (Order-nr. 45324BE0)
- 9.2: Housing (Order-nr. 01153BE0)
- 9.3: Ball rod (Order-nr. 45264000)
- 10: Spray faceplate (Order-nr. 02664000)
- 11: Flexible connection hose (Order-nr. 45704000)
- 12: Vacuum Breaker (Order-nr. 45852BE0)
- 12.1: Shank mounting kit (Order-nr. 45855000)
- 12.2: Non-return valve (Order-nr. 08565000)
- 12.3: Fibre seal dia. 12x2 mm (Order-nr. 0138900M)
- 13: Flexible connector M10x1xM15x1x350 (Order-nr. 46254000)
- 14: Sinfonia cross handles (Order-nr. 18733BE0)*
- 15: Lever Handle (Order-nr. 18734BE0)*
- 16: Coupling nut 1/2" x 10.5 mm (Order-nr. 1290100M)*

* Optional accessories

24 019 BE0 GENEVA 3-HOLE BIDET MIXER

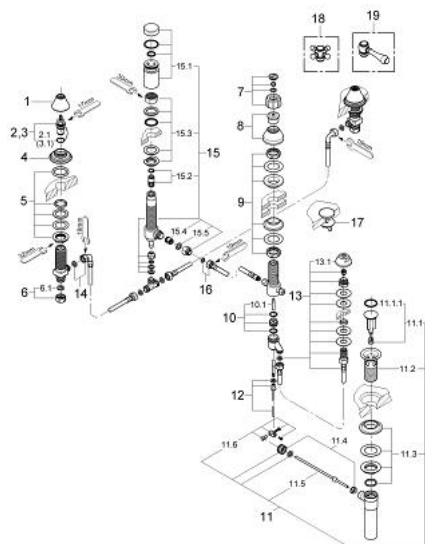


SPARE PARTS, September 2007 – December 2013

- 1: Shield (Order-nr. 45907BE0)
- 2: Ceramic headpart, 1/2" (Order-nr. 45882000)
- 2.1: O-ring $\varnothing 18.2 \times \varnothing 1.7$ (Order-nr. 0392400M)
- 3: Ceramic headpart, 1/2" (Order-nr. 45883000)
- 3.1: O-ring $\varnothing 18.2 \times \varnothing 1.7$ (Order-nr. 0392400M)
- 4: Escutcheon (Order-nr. 45906BE0)
- 5: Shank fastening assembly (Order-nr. 45025000)
- 6: Coupling nut 1/2" x 10.5 mm (Order-nr. 1290100M)
- 6.1: Fibre seal dia. 12x2 mm (Order-nr. 0138900M)
- 7: Screw connection for bidet body (Order-nr. 45026000)
- 8: Repl. kit f. seal (Order-nr. 45027000)
- 9: Swivel vertical pop-up rod (Order-nr. 45646000)
- 10: Pop-up waste set (Order-nr. 28957BE0)
- 10.1: Plug (Order-nr. 45324BE0)
- 10.2: Housing (Order-nr. 01153BE0)
- 10.3: Ball rod (Order-nr. 45264000)
- 11: Rim spray (Order-nr. 24210BE0)
- 11.1: Spray faceplate (Order-nr. 02664000)
- 12: Flexible connection hose (Order-nr. 45704000)
- 13: Vacuum Breaker (Order-nr. 45852BE0)
- 13.1: Shank mounting kit (Order-nr. 45855000)
- 13.2: Non-return valve (Order-nr. 08565000)
- 13.3: Fibre seal dia. 12x2 mm (Order-nr. 0138900M)
- 14: Flexible connector M10x1xM15x1x350 (Order-nr. 46254000)
- 15: Sinfonia cross handles (Order-nr. 18733BE0)*
- 16: Lever Handle (Order-nr. 18734BE0)*

* Optional accessories

24 019 BE0 GENEVA 3-HOLE BIDET MIXER



SPARE PARTS, January 2001 – September 2007

- 1: Shield (Order-nr. 45907BE0)
- 2: Ceramic headpart, 1/2" (Order-nr. 45882000)
- 2.1: O-ring $\varnothing 18.2 \times \varnothing 1.7$ (Order-nr. 0392400M)
- 3: Ceramic headpart, 1/2" (Order-nr. 45883000)
- 3.1: O-ring $\varnothing 18.2 \times \varnothing 1.7$ (Order-nr. 0392400M)
- 4: Escutcheon (Order-nr. 45905BE0)
- 5: Shank mounting kit (Order-nr. 45286000)
- 6: Coupling nut 1/2" x 10.5 mm (Order-nr. 1290100M)
- 6.1: Fibre seal dia. 12x2 mm (Order-nr. 0138900M)
- 7: Repl.kit f.diverter handle (Order-nr. 45709000)
- 8: Escutcheon (Order-nr. 45686BE0)
- 9: Shank mounting kit (Order-nr. 45687000)
- 10: Repl.kit f.diverter lever (Order-nr. 45645000)
- 10.1: Pop-up rod (Order-nr. 45644000)
- 11: Pop-up waste set (Order-nr. 28957BE0)
- 11.1: Plug (Order-nr. 45324BE0)
- 11.2: Housing (Order-nr. 01153BE0)
- 11.3: Ball rod (Order-nr. 45264000)
- 12: Swivel vertical pop-up rod (Order-nr. 45646000)
- 13: Rim spray (Order-nr. 24210BE0)
- 13.1: Spray faceplate (Order-nr. 02664000)
- 14: Flexible connection hose (Order-nr. 45704000)
- 15: Vacuum Breaker (Order-nr. 45852BE0)
- 15.1: Shank mounting kit (Order-nr. 45855000)
- 15.2: Non-return valve (Order-nr. 08565000)
- 15.3: Fibre seal dia. 12x2 mm (Order-nr. 0138900M)
- 16: Connection hose (Order-nr. 28935000)
- 17: Tap hole cover (Order-nr. 28706BE0)
- 18: Sinfonia cross handles (Order-nr. 45776BE0)
- 19: Lever Handle (Order-nr. 45790BE0)