

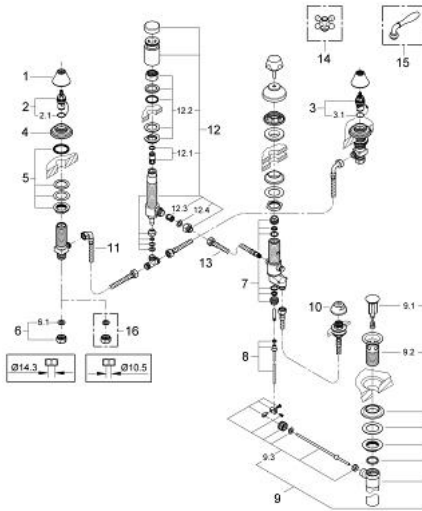
24 020 EN0 SEABURY 3-HOLE BIDET MIXER



PRODUCT DESCRIPTION

- Colour: brushed nickel
- without handles
- rim flush/bidet spray
- with anti-vacuum device
- pressure-proof, flexible connection hoses
- for Seabury cross and lever handles 18 731 / 18 732
- GROHE LongLife finish

24 020 EN0 SEABURY 3-HOLE BIDET MIXER



SPARE PARTS, December 2013 – now

- 1: Shield (Spare part-nr. 45907EN0)
- 2: Ceramic headpart, 1/2" (Spare part-nr. 45882000)
- 2.1: O-ring $\varnothing 18.2 \times \varnothing 1.7$ (Spare part-nr. 0392400M)
- 3: Ceramic headpart, 1/2" (Spare part-nr. 45883000)
- 3.1: O-ring $\varnothing 18.2 \times \varnothing 1.7$ (Spare part-nr. 0392400M)
- 4: Escutcheon (Spare part-nr. 45906EN0)
- 5: Shank fastening assembly (Spare part-nr. 45025000)
- 6: Coupling nut 1/2" x 14.5 mm (Spare part-nr. 1290200M)
- 6.1: Fibre seal dia. 12x2 mm (Spare part-nr. 0138900M)
- 7: Repl. kit f. seal (Spare part-nr. 45027000)
- 8: Swivel vertical pop-up rod (Spare part-nr. 45646000)
- 9: Pop-up waste set (Spare part-nr. 28957EN0)
- 9.1: Plug (Spare part-nr. 45324EN0)
- 9.2: Housing (Spare part-nr. 01153EN0)
- 9.3: Ball rod (Spare part-nr. 45264000)
- 10: Spray faceplate (Spare part-nr. 02664EN0)
- 11: Flexible connection hose (Spare part-nr. 45704000)
- 12: Vacuum Breaker (Spare part-nr. 45852EN0)
- 12.1: Shank mounting kit (Spare part-nr. 45855000)
- 12.2: Non-return valve (Spare part-nr. 08565000)
- 12.3: Fibre seal dia. 12x2 mm (Spare part-nr. 0138900M)
- 13: Flexible connector M10x1xM15x1x350 (Spare part-nr. 46254000)
- 14: Sinfonia cross handles (Spare part-nr. 18731EN0)*
- 15: Lever Handle (Spare part-nr. 18732EN0)*
- 16: Coupling nut 1/2" x 10.5 mm (Spare part-nr. 1290100M)*

* Optional accessories