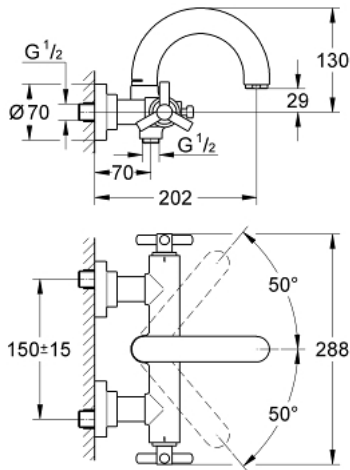


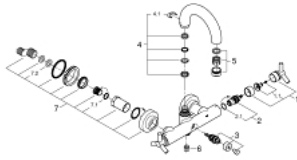
25 010 000 ATRIO BATH/SHOWER MIXER



PRODUCT DESCRIPTION

- Colour: chrome
- wall mounted
- ceramic headparts 1/2", 90°
- GROHE LongLife finish
- automatic diverter: bath/shower
- swivelling tubular spout with Mousseur and stop limiter
- mousseur
- integrated non-return valves in shower outlets 1/2"
- covered S-unions
- Protected against backflow
- without shower set
- with Ypsilon handle

25 010 000 ATRIO BATH/SHOWER MIXER



SPARE PARTS, September 2018 – now

- 1: Handle Atrio Ypsilon (Spare part-nr. 45603000)
- 1.1: Replacement handle connection kit (Spare part-nr. 45605000)
- 2: Ceramic headpart, 1/2" (Spare part-nr. 45882000)
- 2.1: O-ring $\varnothing 18.2 \times \varnothing 1.7$ (Spare part-nr. 0392400M)
- 3: Diverter (Spare part-nr. 45592000)
- 4: Repl.kit f.cast spout (Spare part-nr. 45474000)
- 4.1: Safety washer (Spare part-nr. 0585000M)
- 5: Mousseur (Spare part-nr. 13927000)
- 6: Non-return valve (Spare part-nr. 08565000)
- 7: Screw joint (Spare part-nr. 45631000)
- 7.1: O-ring $\varnothing 17 \times \varnothing 2$ (Spare part-nr. 0305500M)
- 7.2: Ball seal dia. 9x6.8 mm (Spare part-nr. 0138600M)