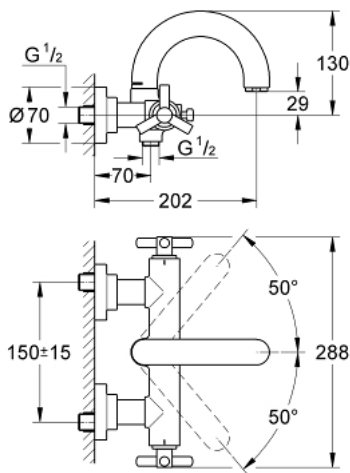


## 25 010 000 **ATRIO BATH/SHOWER MIXER**



### PRODUCT DESCRIPTION

- Colour: chrome
- wall mounted
- ceramic headparts 1/2", 90°
- GROHE Long-Life finish
- automatic diverter: bath/shower
- swivelling tubular spout with Mousseur and stop limiter
- mousseur
- integrated non-return valves in shower outlets 1/2"
- covered S-unions
- Protected against backflow
- without shower set
- with Ypsilon handle

## 25 010 000 ATRIO BATH/SHOWER MIXER



### SPARE PARTS, September 2018 – now

- 1: Handle Atrio Ypsilon (Order-nr. 45603000)
- 1.1: Replacement handle connection kit (Order-nr. 45605000)
- 2: Ceramic headpart, 1/2" (Order-nr. 45882000)
- 2.1: O-ring  $\varnothing 18.2 \times \varnothing 1.7$  (Order-nr. 0392400M)
- 3: Diverter (Order-nr. 45592000)
- 4: Repl.kit f.cast spout (Order-nr. 45474000)
- 4.1: Safety washer (Order-nr. 0585000M)
- 5: Mousseur (Order-nr. 13927000)
- 6: Non-return valve (Order-nr. 08565000)
- 7: Screw joint (Order-nr. 45631000)
- 7.1: O-ring  $\varnothing 17 \times \varnothing 2$  (Order-nr. 0305500M)
- 7.2: Ball seal dia. 9x6.8 mm (Order-nr. 0138600M)