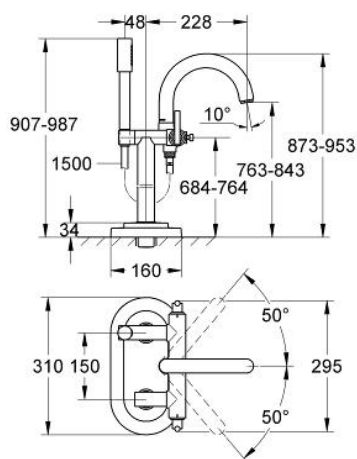


## 25 046 000 **ATRIO BATH MIXER 1/2"**

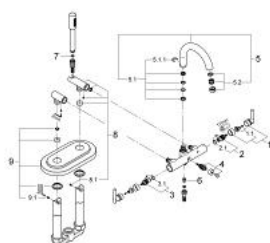


### PRODUCT DESCRIPTION

- Colour: chrome
- floor-mounted installation with high pillar unions (765 mm)
- ceramic headparts 1/2", 90°
- automatic diverter: bath/shower
- swivel tubular spout with mousseur and stop limiter
- projection 228 mm
- integrated non-return valve in the shower outlet 1/2"
- with shower holder
- Sena hand shower
- shower hose 1500 mm
- protected against backflow
- with Jota handle
- to be used with
- 45 473
- without roughing-in set
- GROHE Long-Life finish



## 25 046 000 **ATRIO BATH MIXER 1/2"**



### **SPARE PARTS**, 11月 2007 – now

- 1: Handle Jota (Order-nr. 45609000)
- 1.1: Replacement handle connection kit (Order-nr. 45605000)
- 2: Ceramic headpart 1/2" (Order-nr. 45882000)
- 2.1: O-ring Ø 18.2 x Ø 1.7 (Order-nr. 0392400M)
- 3: Ceramic headpart 1/2" (Order-nr. 45883000)
- 3.1: O-ring Ø 18.2 x Ø 1.7 (Order-nr. 0392400M)
- 4: Diverter (Order-nr. 45592000)
- 5: Spout (Order-nr. 45857000)
- 5.1: Spout connection set (Order-nr. 45474000)
- 5.1.1: Safety disc (Order-nr. 0585000M)
- 5.2: Mousseur (Order-nr. 13939000)
- 6: Non-return valve (Order-nr. 08565000)
- 7: Dirt strainer (Order-nr. 0700200M)
- 8: Shower holder (Order-nr. 45861000)
- 8.1: Thread pin (Order-nr. 0311700M)
- 9: Escutcheon (Order-nr. 45873000)
- 9.1: Thread pin (Order-nr. 0311700M)