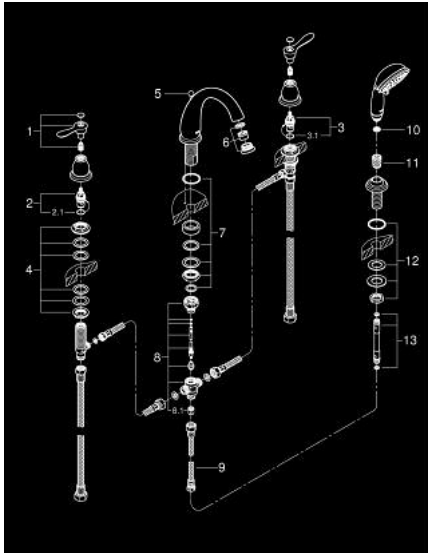


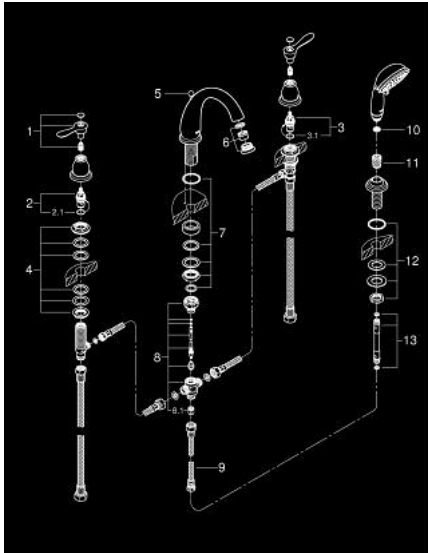
25 153 EN0 PARKFIELD 4-H ROMAN TUB



SPARE PARTS, September 2018 – now

- 1: Parkfield lever blue/red US (Spare part-nr. 48206EN0)
- 2: Ceramic headpart, 1/2" (Spare part-nr. 45882000)
- 2.1: O-ring $\varnothing 18.2 \times \varnothing 1.7$ (Spare part-nr. 0392400M)
- 3: Ceramic headpart, 1/2" (Spare part-nr. 45883000)
- 3.1: O-ring $\varnothing 18.2 \times \varnothing 1.7$ (Spare part-nr. 0392400M)
- 4: Shank fastening assembly (Spare part-nr. 45025000)
- 5: lift rod US (Spare part-nr. 48207EN0)
- 6: Sistra US (Spare part-nr. 48208EN0)
- 7: Shank mounting kit (Spare part-nr. 46078000)
- 8: Diverter (Spare part-nr. 45470000)
- 8.1: Non-return valve (Spare part-nr. 08565000)
- 9: Tube (Spare part-nr. 07300000)
- 10: Dirt strainer (Spare part-nr. 0700200M)
- 11: Cone nut (Spare part-nr. 08864EN0)
- 12: Metal hose (Spare part-nr. 28146000)

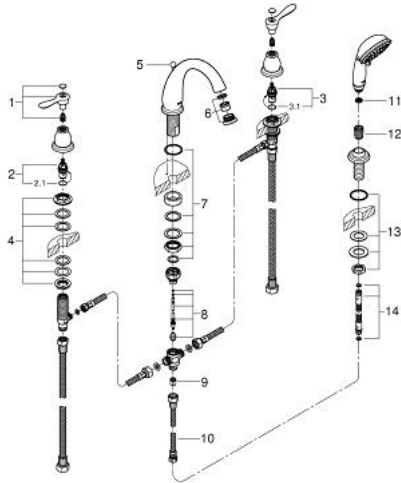
25 153 EN0 PARKFIELD 4-H ROMAN TUB



SPARE PARTS, February 2017 – September 2018

- 1: Parkfield lever blue/red US (Spare part-nr. 48206EN0)
- 2: Ceramic headpart, 1/2" (Spare part-nr. 45882000)
- 2.1: O-ring $\varnothing 18.2 \times \varnothing 1.7$ (Spare part-nr. 0392400M)
- 3: Ceramic headpart, 1/2" (Spare part-nr. 45883000)
- 3.1: O-ring $\varnothing 18.2 \times \varnothing 1.7$ (Spare part-nr. 0392400M)
- 4: Shank fastening assembly (Spare part-nr. 45025000)
- 5: lift rod US (Spare part-nr. 48207EN0)
- 6: Sistra US (Spare part-nr. 48208EN0)
- 7: Shank mounting kit (Spare part-nr. 46078000)
- 8: Diverter (Spare part-nr. 45470000)
- 8.1: Non-return valve (Spare part-nr. 08565000)
- 9: Tube (Spare part-nr. 07300000)
- 10: Dirt strainer (Spare part-nr. 0700200M)
- 11: Cone nut (Spare part-nr. 08864EN0)
- 12: Shank mounting kit (Spare part-nr. 07660000)
- 13: Metal hose (Spare part-nr. 28146000)

25 153 EN0 PARKFIELD 4-H ROMAN TUB



SPARE PARTS, February 2012 – February 2017

- 1: Parkfield lever blue/red US (Spare part-nr. 48205EN0)
- 2: Ceramic headpart, 1/2" (Spare part-nr. 45882000)
- 2.1: O-ring $\varnothing 18.2 \times \varnothing 1.7$ (Spare part-nr. 0392400M)
- 3: Ceramic headpart, 1/2" (Spare part-nr. 45883000)
- 3.1: O-ring $\varnothing 18.2 \times \varnothing 1.7$ (Spare part-nr. 0392400M)
- 4: Shank fastening assembly (Spare part-nr. 45025000)
- 5: lift rod US (Spare part-nr. 48207EN0)
- 6: Sistra US (Spare part-nr. 48208EN0)
- 7: Shank mounting kit (Spare part-nr. 46078000)
- 8: Diverter (Spare part-nr. 45470000)
- 9: Non-return valve (Spare part-nr. 08565000)
- 10: Tube (Spare part-nr. 07300000)
- 11: Dirt strainer (Spare part-nr. 0700200M)
- 12: Cone nut (Spare part-nr. 08864000)
- 13: Shank mounting kit (Spare part-nr. 07660000)
- 14: Metal hose (Spare part-nr. 28146000)