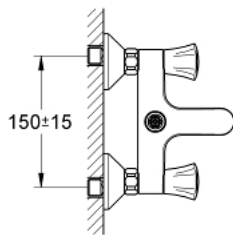
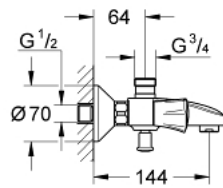


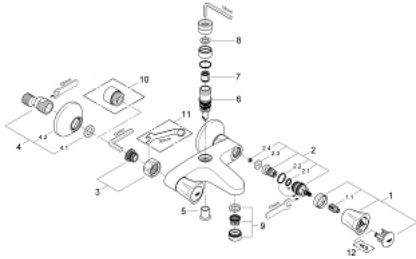
25 452 001 COSTA L BATH/SHOWER MIXER



PRODUCT DESCRIPTION

- Colour: chrome
- wall mounted
- metal handles
- heat-insulated
- screwable
- GROHE Long-Life headpart
- shower outlet above 3/4"
- automatic diverter: bath/shower
- mousseur
- S-unions
- GROHE LongLife finish

25 452 001 COSTA L BATH/SHOWER MIXER



SPARE PARTS, November 2010 – now

- 1: Handle (Spare part-nr. 45994000)
- 1.1: Repl. kit f.handle fastening (Spare part-nr. 0538600M)
- 2: Headpart 1/2" (Spare part-nr. 07146000)
- 2.1: O-ring $\varnothing 6 \times \varnothing 2$ (Spare part-nr. 0128300M)
- 2.2: O-ring $\varnothing 18.2 \times \varnothing 1.7$ (Spare part-nr. 0392400M)
- 2.3: Ball seal dia. 9x6.8 mm (Spare part-nr. 0529100M)
- 3: Screw joint (Spare part-nr. 45044000)
- 4: S-union (Spare part-nr. 12075000)
- 4.1: Ball seal dia. 9x6.8 mm (Spare part-nr. 0138600M)
- 4.2: Escutcheon (Spare part-nr. 0221000M)
- 5: Diverter knob (Spare part-nr. 65648000)
- 6: Diverter (Spare part-nr. 65655000)
- 7: Non-return valve (Spare part-nr. 08565000)
- 8: Fibre seal dia. 12x2 mm (Spare part-nr. 0138900M)
- 9: Mousseur (Spare part-nr. 13952000)
- 10: Extension 3/4", 20 mm (Spare part-nr. 0713000M)*
- 11: Special spanner (Spare part-nr. 19377000)*
- 12: Screw for Costa/Avina products (Spare part-nr. 48013000)*

* Optional accessories