

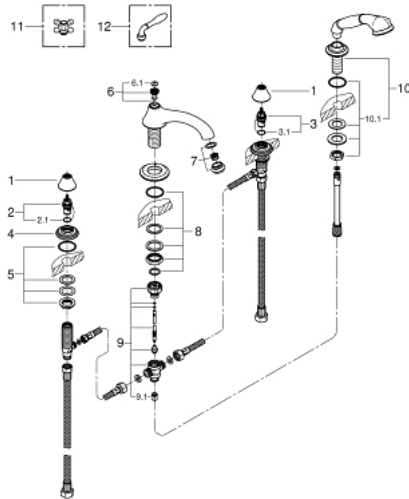
25 502 BE0 SEABURY 4-HOLE BATH/SHOWER COMBINATION



PRODUCT DESCRIPTION

- Colour: polished nickel
- without handles
- Bath spout 10"
- 1/2" valves
- hand shower Seabury
- shower hose
- shower hose 2000 mm
- 2000 mm
- pressure-proof, flexible connection hoses between spout and side valves
- for Seabury cross and lever handles 18 731 / 18 732
- GROHE LongLife finish

25 502 BE0 SEABURY 4-HOLE BATH/SHOWER COMBINATION



SPARE PARTS, February 2017 – now

- 1: Shield (Spare part-nr. 45907BE0)
- 2: Ceramic headpart, 1/2" (Spare part-nr. 45882000)
- 2.1: O-ring $\varnothing 18.2 \times \varnothing 1.7$ (Spare part-nr. 0392400M)
- 3: Ceramic headpart, 1/2" (Spare part-nr. 45883000)
- 3.1: O-ring $\varnothing 18.2 \times \varnothing 1.7$ (Spare part-nr. 0392400M)
- 4: Escutcheon (Spare part-nr. 45906BE0)
- 5: Shank fastening assembly (Spare part-nr. 45025000)
- 6: Pop-up rod (Spare part-nr. 45769BE0)
- 6.1: Marking piece (Spare part-nr. 45763L00)
- 7: Sistra (Spare part-nr. 13934BE0)
- 8: Shank mounting kit (Spare part-nr. 46078000)
- 9: Diverter (Spare part-nr. 45470000)
- 9.1: Non-return valve (Spare part-nr. 08565000)
- 10: Spray holder (Spare part-nr. 45773BE0)
- 10.1: Shank mounting kit (Spare part-nr. 07660000)
- 11: Sinfonia cross handles (Spare part-nr. 18731BE0)*
- 12: Lever Handle (Spare part-nr. 18732BE0)*

* Optional accessories