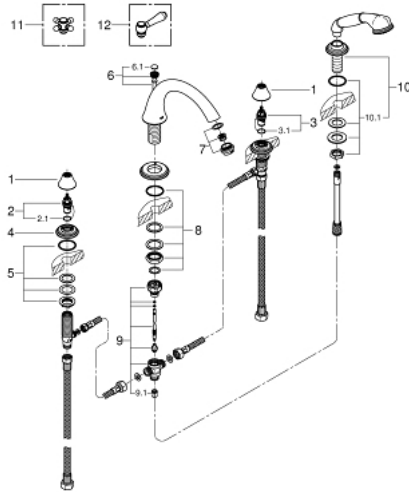


25 506 EN0 GENEVA 4-HOLE BATH/SHOWER COMBINATION

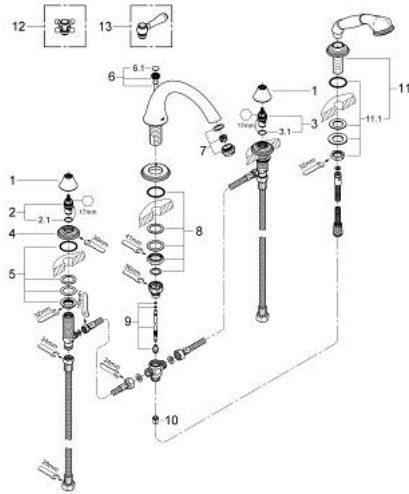


SPARE PARTS, February 2017 – now

- 1: Shield (Spare part-nr. 45907EN0)
- 2: Ceramic headpart, 1/2" (Spare part-nr. 45882000)
- 2.1: O-ring $\varnothing 18.2 \times \varnothing 1.7$ (Spare part-nr. 0392400M)
- 3: Ceramic headpart, 1/2" (Spare part-nr. 45883000)
- 3.1: O-ring $\varnothing 18.2 \times \varnothing 1.7$ (Spare part-nr. 0392400M)
- 4: Escutcheon (Spare part-nr. 45906EN0)
- 5: Shank fastening assembly (Spare part-nr. 45025000)
- 6: Pop-up rod (Spare part-nr. 45817EN0)
- 6.1: Marking piece (Spare part-nr. 45763L00)
- 7: Sistra (Spare part-nr. 13934EN0)
- 8: Shank mounting kit (Spare part-nr. 46078000)
- 9: Diverter (Spare part-nr. 45470000)
- 9.1: Non-return valve (Spare part-nr. 08565000)
- 10: Spray holder (Spare part-nr. 45819EN0)
- 10.1: Shank mounting kit (Spare part-nr. 07660000)
- 11: Sinfonia cross handles (Spare part-nr. 18733EN0)*
- 12: Lever Handle (Spare part-nr. 18734EN0)*

* Optional accessories

25 506 EN0 GENEVA 4-HOLE BATH/SHOWER COMBINATION

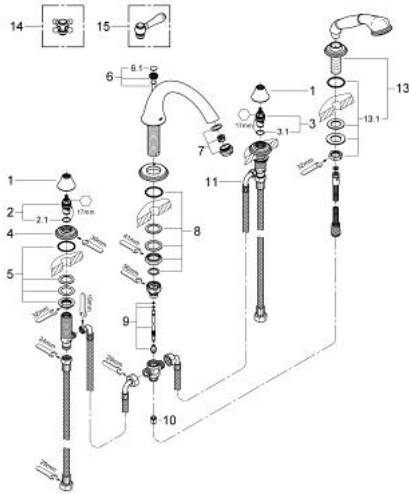


SPARE PARTS, August 2012 – February 2017

- 1: Shield (Spare part-nr. 45907EN0)
- 2: Ceramic headpart, 1/2" (Spare part-nr. 45882000)
- 2.1: O-ring $\varnothing 18.2 \times \varnothing 1.7$ (Spare part-nr. 0392400M)
- 3: Ceramic headpart, 1/2" (Spare part-nr. 45883000)
- 3.1: O-ring $\varnothing 18.2 \times \varnothing 1.7$ (Spare part-nr. 0392400M)
- 4: Escutcheon (Spare part-nr. 45906EN0)
- 5: Shank fastening assembly (Spare part-nr. 45025000)
- 6: Pop-up rod (Spare part-nr. 45817EN0)
- 6.1: Marking piece (Spare part-nr. 45763L00)
- 7: Sistra (Spare part-nr. 13934EN0)
- 8: Shank mounting kit (Spare part-nr. 46078000)
- 9: Diverter (Spare part-nr. 45470000)
- 10: Non-return valve (Spare part-nr. 08565000)
- 11: Spray holder (Spare part-nr. 45819EN0)
- 11.1: Shank mounting kit (Spare part-nr. 07660000)
- 12: Sinfonia cross handles (Spare part-nr. 18733EN0)*
- 13: Lever Handle (Spare part-nr. 18734EN0)*

* Optional accessories

25 506 EN0 GENEVA 4-HOLE BATH/SHOWER COMBINATION

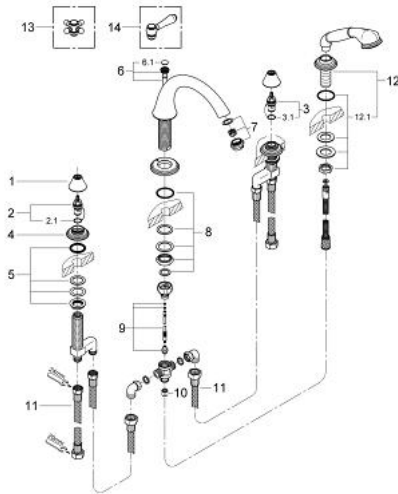


SPARE PARTS, May 2009 – August 2012

- 1: Shield (Spare part-nr. 45907EN0)
- 2: Ceramic headpart, 1/2" (Spare part-nr. 45882000)
- 2.1: O-ring $\varnothing 18.2 \times \varnothing 1.7$ (Spare part-nr. 0392400M)
- 3: Ceramic headpart, 1/2" (Spare part-nr. 45883000)
- 3.1: O-ring $\varnothing 18.2 \times \varnothing 1.7$ (Spare part-nr. 0392400M)
- 4: Escutcheon (Spare part-nr. 45906EN0)
- 5: Shank fastening assembly (Spare part-nr. 45025000)
- 6: Pop-up rod (Spare part-nr. 45817EN0)
- 6.1: Marking piece (Spare part-nr. 45763L00)
- 7: Sistra (Spare part-nr. 13934EN0)
- 8: Shank mounting kit (Spare part-nr. 46078000)
- 9: Diverter (Spare part-nr. 45470000)
- 10: Non-return valve (Spare part-nr. 08565000)
- 11: Flexible hose (Spare part-nr. 03052000)
- 12: Spray holder (Spare part-nr. 45819EN0)
- 12.1: Shank mounting kit (Spare part-nr. 07660000)
- 13: Sinfonia cross handles (Spare part-nr. 18733EN0)*
- 14: Lever Handle (Spare part-nr. 18734EN0)*

* Optional accessories

25 506 EN0 GENEVA 4-HOLE BATH/SHOWER COMBINATION



SPARE PARTS, October 2004 – May 2009

- 1: Shield (Spare part-nr. 45907EN0)
- 2: Ceramic headpart, 1/2" (Spare part-nr. 45882000)
- 2.1: O-ring $\varnothing 18.2 \times \varnothing 1.7$ (Spare part-nr. 0392400M)
- 3: Ceramic headpart, 1/2" (Spare part-nr. 45883000)
- 3.1: O-ring $\varnothing 18.2 \times \varnothing 1.7$ (Spare part-nr. 0392400M)
- 4: Escutcheon (Spare part-nr. 45906EN0)
- 5: Shank fastening assembly (Spare part-nr. 45025000)
- 6: Pop-up rod (Spare part-nr. 45817EN0)
- 6.1: Marking piece (Spare part-nr. 45763L00)
- 7: Sistra (Spare part-nr. 13934EN0)
- 8: Shank mounting kit (Spare part-nr. 46078000)
- 9: Diverter (Spare part-nr. 45470000)
- 10: Non-return valve (Spare part-nr. 08565000)
- 11: Connection hose (Spare part-nr. 07772000)
- 12: Spray holder (Spare part-nr. 45819EN0)
- 12.1: Shank mounting kit (Spare part-nr. 07660000)
- 13: Sinfonia cross handles (Spare part-nr. 18733EN0)*
- 14: Lever Handle (Spare part-nr. 18734EN0)*

* Optional accessories