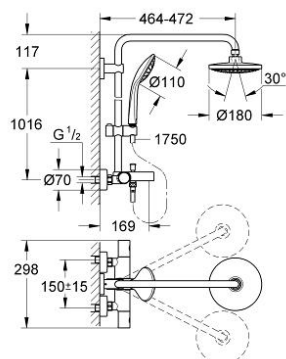


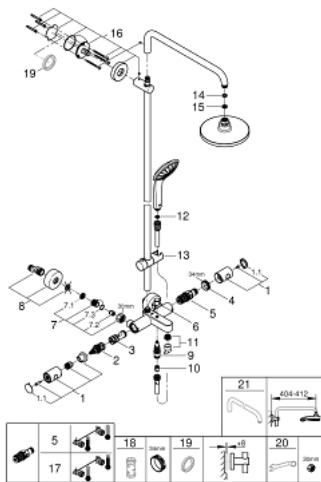
26 114 000 EUPHORIA SYSTEM 180 SHOWER SYSTEM WITH BATH THERMOSTAT FOR WALL MOUNTING



PRODUCT DESCRIPTION

- Colour: chrome
- consisting of:
 - horizontal swivable 450 mm shower arm
 - exposed thermostat with Aquadimmer function
 - allows change between:
 - head shower 1 spray (27 491)
 - Rain
 - chrome plated spray face
 - with ball joint
 - rotation angle $\pm 15^\circ$
 - bath inlet
 - separate diverter for hand shower
 - hand shower 3 sprays (27 221)
 - Rain, SmartRain, Massage
 - adjustable in height with gliding element
 - Silverflex shower hose 1750 mm 1/2" x 1/2" (28 388)
 - distance between thermostat and upper bracket: 1016 mm
 - GROHE TurboStat compact cartridge with wax thermoelement
 - GROHE DreamSpray perfect spray pattern
 - GROHE SprayDimmer
 - GROHE Long-Life finish
 - SpeedClean anti-limescale system
 - Inner WaterGuide for a longer life
 - rotation cone for TwistStop-function
 - suitable for instantaneous heaters from 18 kW/h

26 114 000 EUPHORIA SYSTEM 180 SHOWER SYSTEM WITH BATH THERMOSTAT FOR WALL MOUNTING



SPARE PARTS, 6月 2016 – now

- 1: Metal handle 1/2" (Order-nr. 47984000)
- 1.1: Cover cap (Order-nr. 6458500M)
- 2: Aquadimmer (Order-nr. 47364000)
- 3: Water flow (Order-nr. 47887000)
- 4: Fitting ring (Order-nr. 47743000)
- 5: Thermostatic compact cartridge 1/2" (Order-nr. 47439000)
- 6: Diverter knob (Order-nr. 65648000)
- 7: Non-return valve (Order-nr. 47189000)
- 7.1: Dirt strainer (Order-nr. 0726400M)
- 7.2: Non-return valve (Order-nr. 08565000)
- 7.3: O-ring $\varnothing 17 \times \varnothing 2$ (Order-nr. 0305500M)
- 8: S-union (Order-nr. 12662000)
- 9: Diverter (Order-nr. 65655000)
- 10: Non-return valve (Order-nr. 08565000)
- 11: Mousseur (Order-nr. 13926000)
- 12: Dirt strainer (Order-nr. 0700200M)
- 13: Glide element (Order-nr. 12140000)
- 14: Fibre seal $\varnothing 18,5 \times \varnothing 12 \times 2$ (Order-nr. 0138900M)
- 15: Dirt strainer (Order-nr. 48007000)
- 16: Shower rail holder (Order-nr. 48279000)
- 17: GROHE TurboStat cartridge 1/2" (Order-nr. 47175000)*
- 18: Socket spanner (Order-nr. 19332000)*
- 19: Compensation disc (Order-nr. 27180000)*
- 20: Special spanner (Order-nr. 19377000)*
- 21: Shower arm for shower systems (Order-nr. 14047000)*

* Optional accessories