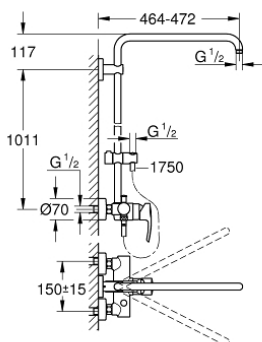


26 240 000 EUPHORIA SYSTEM SHOWER SYSTEM WITH SINGLE LEVER MIXER FOR WALL MOUNTING

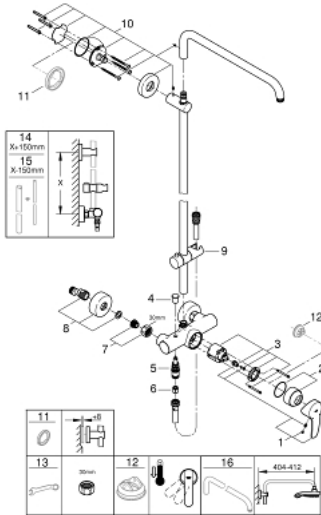


PRODUCT DESCRIPTION

- Colour: chrome
- consists of:
 - Horizontal swivable 450 mm shower arm
 - Exposed single-lever shower mixer with diverter
 - gliding element
 - shower hose Silverflex 1750 mm 1/2" x 1/2" (28 388)
 - GROHE SilkMove 46 mm ceramic cartridge
 - GROHE LongLife finish
 - Inner WaterGuide - inner insulation for surface protection
 - TwistStop - to prevent hose from twisting
- minimum flow rate 7 l/min.
- suitable for instantaneous heaters (min. 19 kW/h)
- minimum pressure 1,0 bar



26 240 000 EUPHORIA SYSTEM SHOWER SYSTEM WITH SINGLE LEVER MIXER FOR WALL MOUNTING



SPARE PARTS, July 2017 – now

- 1: Lever (Spare part-nr. 46577000)
 - 2: Shield (Spare part-nr. 46025000)
 - 3: Cartridge (Spare part-nr. 46048000)
 - 4: Diverter knob (Spare part-nr. 65648000)
 - 5: Diverter (Spare part-nr. 65655000)
 - 6: Non-return valve (Spare part-nr. 08565000)
 - 7: Screw joint (Spare part-nr. 45044000)
 - 8: S-union (Spare part-nr. 12662000)
 - 9: Sliding piece (Spare part-nr. 12140000)
 - 10: Outlet shower holder (Spare part-nr. 48279000)
 - 11: Compensation disc (Spare part-nr. 27180000)*
 - 12: Temperature limiter (Spare part-nr. 46375000)*
 - 13: Special spanner (Spare part-nr. 19377000)*
 - 14: Shower system pipe for retrofitting (Spare part-nr. 48053000)*
 - 15: Shower system pipe for retrofitting (Spare part-nr. 48054000)*
 - 16: Shower arm for shower systems (Spare part-nr. 14047000)*
- * Optional accessories