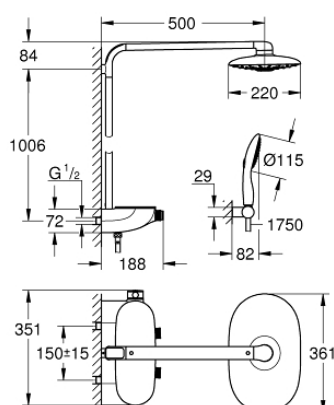


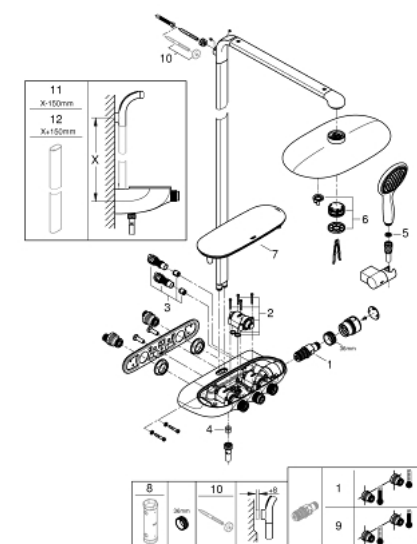
## 26 250 000 RAINSHOWER SYSTEM SMARTCONTROL DUO 360 SHOWER SYSTEM WITH THERMOSTAT FOR WALL MOUNTING



### PRODUCT DESCRIPTION

- Colour: chrome
- consists of:
  - horizontal 500 mm shower arm
  - exposed SmartControl thermostat
  - allows change between:
    - head shower Rainshower Duo 360, spray plate chrome
    - GROHE PureRain/GROHE Rain O<sup>2</sup> spray\* and TrioMassage
    - Power&Soul 115 hand shower, spray plate white (27 671)
    - hand shower wall holder (27 055)
    - shower hose Silverflex 1750 mm 1/2" x 1/2" (28 388)
  - minimum flow rate 10 l/min.
- GROHE DreamSpray perfect spray pattern
- GROHE Long-Life finish
- GROHE CoolTouch no risk of scalding
- GROHE TurboStat compact cartridge with wax thermoelement
- GROHE Water Saving - Less water, perfect flow
- GROHE SafeStop at 38°C
- GROHE SafeStop Plus optional temperature limiter at 43°C included
- GROHE SmartControl push for ON-OFF, turn for volume adjustment from GROHE Water Saving to Full Flow
- GROHE EasyReach shower tray
- SpeedClean anti-lime system
- Inner WaterGuide for a longer life
- suitable for instantaneous heaters (min. 19 kW/h)
- TwistStop (to prevent hose from twisting)
- \* to be decided at first installation; factory default setting: GROHE PureRain

## 26 250 000 RAINSHOWER SYSTEM SMARTCONTROL DUO 360 SHOWER SYSTEM WITH THERMOSTAT FOR WALL MOUNTING



### SPARE PARTS, October 2018 – now

- 1: Thermostatic compact cartridge 1/2" (Order-nr. 47439000)
  - 2: Cartridge (Order-nr. 48297000)
  - 3: Non-return valve (Order-nr. 4901000M)
  - 4: Non-return valve (Order-nr. 08565000)
  - 5: Dirt strainer (Order-nr. 0700200M)
  - 6: Spray face (Order-nr. 48348000)
  - 7: Cover (Order-nr. 48482000)
  - 8: Socket spanner (Order-nr. 49059000)\*
  - 9: GROHE TurboStat cartridge 1/2" (Order-nr. 47175000)\*
  - 10: Compensation disc (Order-nr. 26385000)\*
  - 11: Shower system pipe for retrofitting (Order-nr. 48349000)\*
  - 12: Shower system pipe for retrofitting (Order-nr. 48350000)\*
- \* Optional accessories