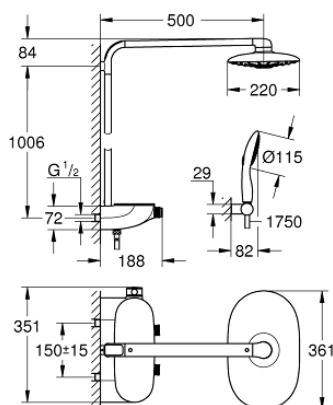
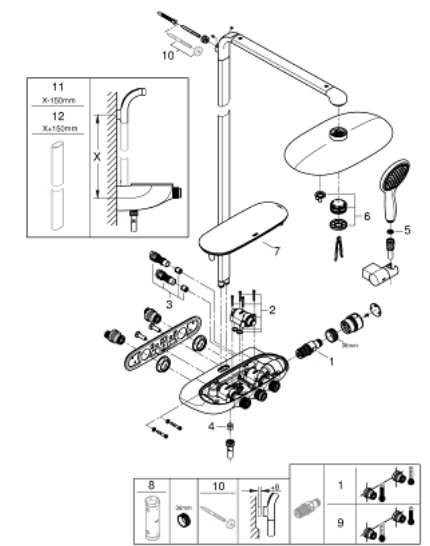


A modern, chrome-finished shower system. It features a large, square overhead rain showerhead mounted on a tall, vertical chrome pipe. Below the pipe is a horizontal sliding bar with a handheld showerhead attached. The bar also houses a control panel with three knobs. A flexible chrome hose connects the handheld showerhead to the bar. The entire system is set against a plain white background.



- Colour: moon white/chrome
- consisting of:
- horizontal 500 mm shower arm
- exposed SmartControl thermostat
- allows change between:
- head shower Rainshower Duo 360, spray plate white
- GROHE PureRain/GROHE Rain O² spray* and TrioMassage
- Power&Soul 115 hand shower, spray plate white (27 671)
- hand shower wall holder (27 055)
- Silverflex shower hose 1750 mm 1/2" x 1/2" (28 388)
- minimum flow rate 10 l/min
- GROHE DreamSpray perfect spray pattern
- GROHE Long-Life finish
- GROHE CoolTouch no risk of scalding
- GROHE TurboStat compact cartridge with wax thermoelement
- GROHE Water Saving - Less water, perfect flow
- GROHE SafeStop safety button at 38°C
- GROHE SafeStop Plus optional temperature limiter at 43°C included
- GROHE SmartControl push for ON-OFF, turn for volume adjustment from GROHE Water Saving to Full Flow
- GROHE EasyReach shower tray
- SpeedClean anti-limescale system
- Inner WaterGuide for a longer life
- suitable for instantaneous heaters from 18 kW/h
- TwistStop to prevent hose from twisting
- * to be decided at first installation; factory default setting: GROHE PureRain
- GROHE Long-Life finish

26 250 LS0 RAINSHOWER SYSTEM SMARTCONTROL DUO 360 SHOWER SYSTEM WITH THERMOSTAT FOR WALL MOUNTING



SPARE PARTS, 10月 2018 – now

- 1: Thermostatic compact cartridge 1/2" (Order-nr. 47439000)
 - 2: Cartridge (Order-nr. 48297000)
 - 3: Non-return valve (Order-nr. 4901000M)
 - 4: Non-return valve (Order-nr. 08565000)
 - 5: Dirt strainer (Order-nr. 0700200M)
 - 6: Spray face (Order-nr. 48348000)
 - 7: Cover (Order-nr. 48482000)
 - 8: Socket spanner (Order-nr. 49059000)*
 - 9: GROHE TurboStat cartridge 1/2" (Order-nr. 47175000)*
 - 10: Compensation disc (Order-nr. 26385000)*
 - 11: Shower system pipe for retrofitting (Order-nr. 48349000)*
 - 12: Shower system pipe for retrofitting (Order-nr. 48350000)*
- * Optional accessories