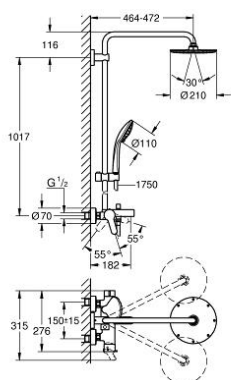
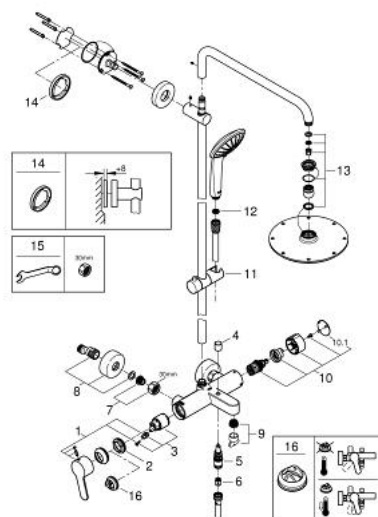


A modern, chrome-finished shower system. It features a wall-mounted vertical bar with a large overhead rain showerhead and a handheld showerhead on a sliding bar. The system includes a single-lever faucet with a diverter.



- Colour: chrome
- consists of:
- Horizontal swivable 450 mm shower arm
- exposed single-lever bath mixer with diverter handle
- allows change between:
- Rainshower Cosmopolitan 210 metal head shower (28 368 000)
- spray pattern: Rain
- with ball joint
- angle of rotation $\pm 15^\circ$
- bath spout
- separate diverter for hand shower
- hand shower Euphoria 110 Massage (27 221)
- spray patterns:
- Rain, SmartRain, Massage
- adjustable in height with gliding element
- shower hose Silverflex 1750 mm 1/2" x 1/2" (28 388)
- distance between single-lever mixer and upper bracket: 1011 mm
- GROHE SilkMove 35 mm ceramic cartridge
- GROHE DreamSpray perfect spray pattern
- GROHE Long-Life finish
- SpeedClean anti-lime system
- Inner WaterGuide for a longer life
- TwistStop (to prevent hose from twisting)
- suitable for instantaneous heaters (min. 19 kW/h)
- minimum flow rate 7 l/min.
- minimum pressure 1,0 bar

26 314 000 EUPHORIA SYSTEM 210 SHOWER SYSTEM WITH SINGLE LEVER BATH MIXER FOR WALL MOUNTING



SPARE PARTS, October 2014 – now

- 1: Lever (Order-nr. 46750000)
- 2: Screw coupling (Order-nr. 46460000)
- 3: Cartridge (Order-nr. 46374000)
- 4: Diverter knob (Order-nr. 64309000)
- 5: Diverter (Order-nr. 65655000)
- 6: Non-return valve (Order-nr. 08565000)
- 7: Screw joint (Order-nr. 45044000)
- 8: S-union (Order-nr. 12662000)
- 9: Mousseur (Order-nr. 13926000)
- 10: Diverter (Order-nr. 46921000)
- 10.1: Cap (Order-nr. 4788300M)
- 11: Sliding piece (Order-nr. 12140000)
- 12: Dirt strainer (Order-nr. 0700200M)
- 13: Inlet valve assembly (Order-nr. 45933000)
- 14: Compensation disc (Order-nr. 27180000)*
- 15: Special spanner (Order-nr. 19377000)*
- 16: Temperature limiter (Order-nr. 46375000)*

* Optional accessories