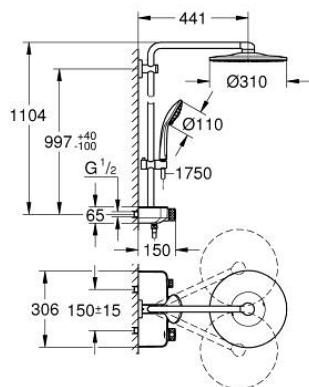


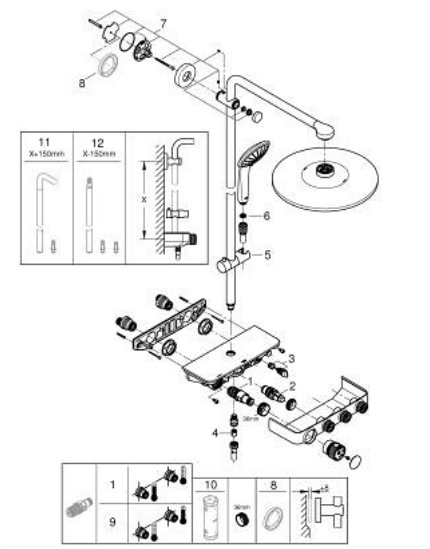
## 26 507 000 EUPHORIA SMARTCONTROL SYSTEM 310 DUO SHOWER SYSTEM WITH THERMOSTAT FOR WALL MOUNTING



### PRODUCT DESCRIPTION

- Colour: chrome
- consisting of:
- horizontal 450 mm shower arm
- upper bracket adjustable for minimal adaption to existing drilling holes
- exposed SmartControl thermostat
- allows change between:
- head shower Rainshower SmartActive 310
- 2 spray patterns:
- GROHE PureRain, ActiveRain
- maximum flow rate (at 3 bar): 20 l/min
- hand shower Euphoria 110 Massage, spray plate white (27 221 001)
- 3 spray patterns:
- Rain, SmartRain, Massage
- maximum flow rate (at 3 bar): 16 l/min
- adjustable in height with gliding element
- Silverflex shower hose 1750 mm 1/2" x 1/2" (28 388)
- GROHE DreamSpray perfect spray pattern
- GROHE Long-Life finish
- GROHE CoolTouch no risk of scalding
- GROHE TurboStat compact cartridge with wax thermoelement
- GROHE ProGrip with knurl structure
- GROHE SafeStop at 38°C
- GROHE SafeStop Plus optional temperature limiter at 43°C included
- GROHE SmartControl push for ON-OFF, turn for volume adjustment from GROHE Water Saving to Full Flow
- integrated GROHE EasyReach shower tray
- SpeedClean anti-limescale system
- Inner WaterGuide for a longer life
- TwistStop to prevent hose from twisting
- suitable for instantaneous heaters from 18 kW/h
- minimum flow rate 7 l/min

## 26 507 000 EUPHORIA SMARTCONTROL SYSTEM 310 DUO SHOWER SYSTEM WITH THERMOSTAT FOR WALL MOUNTING



### SPARE PARTS, 2月 2019 – now

- 1: Thermostatic compact cartridge 1/2" (Order-nr. 47439000)
  - 2: Cartridge (Order-nr. 48297000)
  - 3: Non-return valve (Order-nr. 49069000)
  - 4: Non-return valve (Order-nr. 08565000)
  - 5: Glide element (Order-nr. 48177000)
  - 6: Dirt strainer (Order-nr. 0700200M)
  - 7: Shower rail holder (Order-nr. 48279000)
  - 8: Compensation disc (Order-nr. 27180000)\*
  - 9: GROHE TurboStat cartridge 1/2" (Order-nr. 47175000)\*
  - 10: Socket spanner (Order-nr. 49059000)\*
  - 11: Shower system pipe for retrofitting (Order-nr. 48497000)\*
  - 12: Shower system pipe for retrofitting (Order-nr. 48498000)\*
- \* Optional accessories