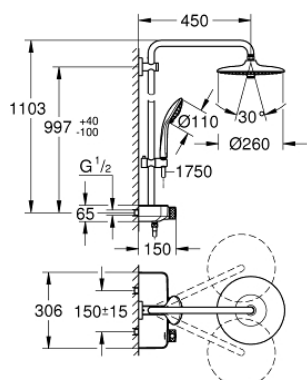


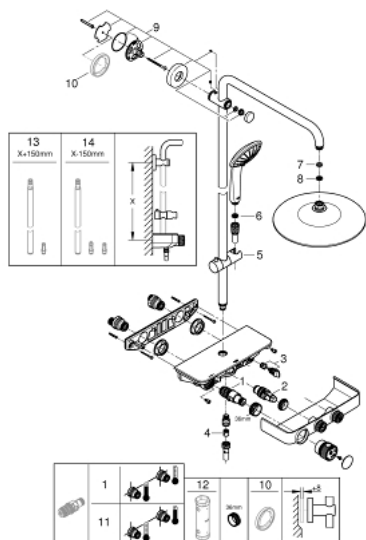
26 509 000 EUPHORIA SMARTCONTROL SYSTEM 260 MONO SHOWER SYSTEM WITH THERMOSTAT FOR WALL MOUNTING



PRODUCT DESCRIPTION

- Colour: chrome
- consisting of:
 - horizontal 450 mm shower arm
 - upper bracket adjustable for minimal adaption to existing drilling holes
 - exposed SmartControl thermostat
 - allows change between:
 - head shower Euphoria 260 (26 455)
 - 3 spray patterns:
 - Rain, SmartRain, Jet
 - maximum flow rate (at 3 bar): 16 l/min
 - with ball joint
 - rotation angle $\pm 15^\circ$
 - hand shower Euphoria 110 Massage, spray plate white (27 221 001)
 - 3 spray patterns:
 - Rain, SmartRain, Massage
 - maximum flow rate (at 3 bar): 15 l/min
 - adjustable in height with gliding element
 - Silverflex shower hose 1750 mm 1/2" x 1/2" (28 388)
 - GROHE DreamSpray perfect spray pattern
 - GROHE Long-Life finish
 - GROHE CoolTouch no risk of scalding
 - GROHE TurboStat compact cartridge with wax thermoelement
 - GROHE ProGrip with knurl structure
 - GROHE SafeStop at 38°C
 - GROHE SafeStop Plus optional temperature limiter at 43°C included
 - GROHE SmartControl push for ON-OFF, turn for volume adjustment from GROHE Water Saving to Full Flow
 - integrated GROHE EasyReach shower tray
 - SpeedClean anti-limescale system
 - Inner WaterGuide for a longer life
 - TwistStop to prevent hose from twisting
- suitable for instantaneous heaters from 18 kW/h
- minimum flow rate 7 l/min

26 509 000 EUPHORIA SMARTCONTROL SYSTEM 260 MONO SHOWER SYSTEM WITH THERMOSTAT FOR WALL MOUNTING



SPARE PARTS, 2月 2019 – 3月 2021

- 1: Thermostatic compact cartridge 1/2" (Order-nr. 47439000)
- 2: Cartridge (Order-nr. 48297000)
- 3: Non-return valve (Order-nr. 49069000)
- 4: Non-return valve (Order-nr. 08565000)
- 5: Glide element (Order-nr. 48177000)
- 6: Dirt strainer (Order-nr. 0700200M)
- 7: Fibre seal Ø 18,5 x Ø 12 x 2 (Order-nr. 0138900M)
- 8: Dirt strainer (Order-nr. 48007000)
- 9: Shower rail holder (Order-nr. 48279000)
- 10: Compensation disc (Order-nr. 27180000)*
- 11: GROHE TurboStat cartridge 1/2" (Order-nr. 47175000)*
- 12: Socket spanner (Order-nr. 49059000)*
- 13: Shower system pipe for retrofitting (Order-nr. 48499000)*
- 14: Shower system pipe for retrofitting (Order-nr. 48498000)*

* Optional accessories