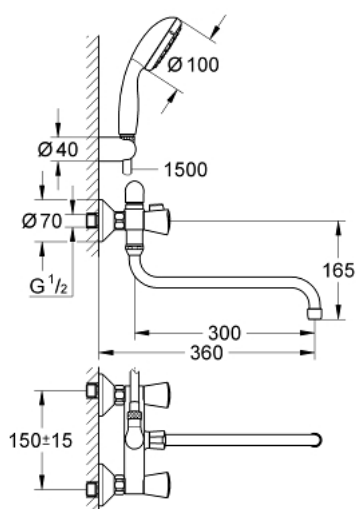


26 792 001 **COSTA S SOLID BASIN MIXER 1/2"**

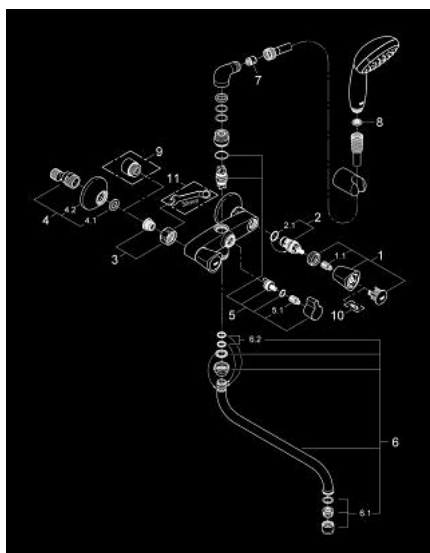


PRODUCT DESCRIPTION

- Colour: chrome
- wall mounted
- metal handles
- heat insulated
- screwable
- Carbodur headpart
- diverter bath/shower
- S-unions
- connection angle 3/4" x 3/4" (12 419)
- spout 300 mm (13 017)
- hand shower Tempesta 100, 1 spray, 9.5 l/min (27 923 000)
- Relaxaflex hose 1500 mm 1/2" x 1/2" (28 151)
- wall shower holder (28 605)
- GROHE Long-Life finish



26 792 001 **COSTA S SOLID BASIN MIXER 1/2"**



SPARE PARTS, 10月 2013 – now

- 1: Handle (Order-nr. 45995000)
 - 1.1: Snap insert (Order-nr. 0538600M)
 - 2: Ceramic headpart 1/2" (Order-nr. 45346000)
 - 2.1: O-ring Ø 18.2 x Ø 1.7 (Order-nr. 0392400M)
 - 3: Screw connection 1/2" (Order-nr. 45044000)
 - 4: S-union (Order-nr. 12075000)
 - 4.1: Seal (Order-nr. 0138600M)
 - 4.2: Escutcheon (Order-nr. 0221000M)
 - 5: Replacement kit for rotary valve (Order-nr. 48006000)
 - 5.1: Snap insert (Order-nr. 0538600M)
 - 6: S spout (Order-nr. 13017000)
 - 6.1: Mousseur (Order-nr. 13928000)
 - 6.2: Sealing washer (Order-nr. 0128500M)
 - 7: Non-return valve (Order-nr. 08565000)
 - 8: Dirt strainer (Order-nr. 0700200M)
 - 9: Extension 3/4", 20 mm (Order-nr. 0713000M)*
 - 10: Screw for Costa/Avina products (Order-nr. 48013000)*
 - 11: Special spanner (Order-nr. 19377000)*
- * Optional accessories