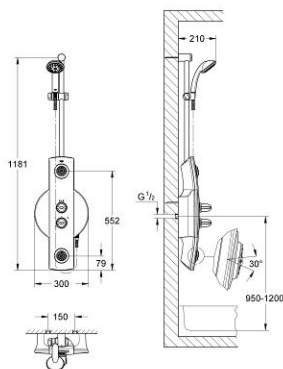


27 015 000 AQUATOWER 1000 SHOWER SYSTEM

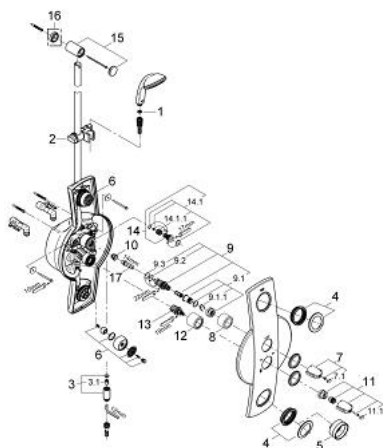


PRODUCT DESCRIPTION

- Colour: chrome
- wall mounted
- Profile:
 - Coated synthetic profile
 - shower bar with glider and handshower
 - deposit behind the panel
- Showers:
 - hand shower (28 261)
 - 2 multi-nozzle adjustable side showers (30°)
 - all showers equipped with SpeedClean
 - Relexaflex-hose 1750 mm 28 154
- Fittings:
 - pre-assembled installation unit
 - thermostat 1/2"
 - Aquadimmer 1/2" to select hand- and/or side showers
 - direct installation at included elbow connections
- Colours:
 - synthetic pannel coated in matt silk-chrome
 - fittings, showers, shower bar and shower hose chrome
 - suitable for instantaneous heater
 - GROHE Long-Life finish



27 015 000 AQUATOWER 1000 SHOWER SYSTEM



SPARE PARTS, April 2008 – now

- 1: Dirt strainer (Order-nr. 0700200M)
- 2: Sliding piece (Order-nr. 65380000)
- 3: Outlet nipple (Order-nr. 47424000)
- 3.1: Non-return valve (Order-nr. 08565000)
- 4: Escutcheon (Order-nr. 09532000)
- 5: Installation tool (Order-nr. 09813000)
- 6: Spray faceplate (Order-nr. 45244XX0)
- 7: Handle (Order-nr. 47542IP0)
- 7.1: Cap (Order-nr. 02490P0M)
- 8: Sleeve (Order-nr. 04952000)
- 9: Thermo-element 1/2" (Order-nr. 47217000)
- 9.1: Stop ring + regulating nut (Order-nr. 47300000)
- 9.1.1: Fixing clamp (Order-nr. 0574400M)
- 9.2: O-ring $\varnothing 21 \times \varnothing 2$ (Order-nr. 0599900M)
- 9.3: O-ring $\varnothing 24 \times \varnothing 2$ (Order-nr. 0119600M)
- 10: Seat for thermostat (Order-nr. 01460000)
- 11: Handle (Order-nr. 47374IP0)
- 11.1: Cap (Order-nr. 02490P0M)
- 12: Sleeve (Order-nr. 02730000)
- 13: Aquadimmer (Order-nr. 47364000)
- 14: Non-return valve 1/2" (Order-nr. 1411600M)
- 14.1: Repl. kit f. seal (Order-nr. 47303000)
- 14.1.1: Dirt strainer (Order-nr. 0299000M)
- 15: Outlet shower holder (Order-nr. 45246000)
- 16: Compensation disc (Order-nr. 45406000)*
- 17: Socket spanner (Order-nr. 19070000)*

* Optional accessories