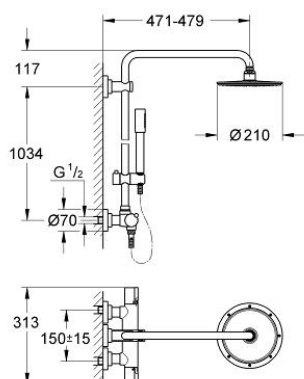


## 27 032 000 RAINSHOWER SYSTEM 210 SHOWER SYSTEM WITH THERMOSTAT FOR WALL MOUNTING

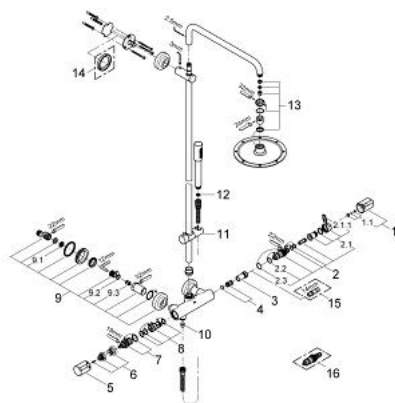


### PRODUCT DESCRIPTION

- Colour: chrome
- consists of:
  - Horizontal swivable 450 mm shower arm
  - exposed thermostat with Aquadimmer function
  - allows change between:
    - Rainshower Cosmopolitan 210 metal head shower (28 368 000)
    - ball joint with turning angle  $20^\circ \pm 20^\circ$
  - handshower 28 034 000
  - adjustable in height with gliding element (12 140 000)
  - - diverter: bath/shower
  - metal shower hose 1750 mm
  - suitable for instantaneous heaters (min. 19 kW/h)
  - minimum flow rate 7 l/min.
  - Attention: old product
  - GROHE Long-Life finish



## 27 032 000 RAINSHOWER SYSTEM 210 SHOWER SYSTEM WITH THERMOSTAT FOR WALL MOUNTING



### SPARE PARTS, October 2007 – now

- 1: Scale handle (Order-nr. 47239000)
- 1.1: Replacement handle connection kit (Order-nr. 47248000)
- 2: Thermo-element 1/2" (Order-nr. 47217000)
- 2.1: Stop ring + regulating nut (Order-nr. 47300000)
- 2.1.1: Fixing clamp (Order-nr. 0574400M)
- 2.2: O-ring  $\varnothing 21 \times \varnothing 2$  (Order-nr. 0599900M)
- 2.3: O-ring  $\varnothing 24 \times \varnothing 2$  (Order-nr. 0119600M)
- 3: Seat for thermostat (Order-nr. 47399000)
- 4: Sound absorber (Order-nr. 47398000)
- 5: Handle for shut-off valve (Order-nr. 47730000)
- 6: Temperature limiter (Order-nr. 47626000)
- 7: Aquadimmer (Order-nr. 47364000)
- 8: Water flow (Order-nr. 47376000)
- 9: Screw joint (Order-nr. 47323000)
- 9.1: Dirt Strainer (Order-nr. 0726400M)
- 9.2: O-ring  $\varnothing 17 \times \varnothing 2$  (Order-nr. 0305500M)
- 9.3: Non-return valve (Order-nr. 08565000)
- 10: Non-return valve (Order-nr. 08565000)
- 11: Sliding piece (Order-nr. 12140000)
- 12: Dirt strainer (Order-nr. 0700200M)
- 13: Inlet valve assembly (Order-nr. 45933000)
- 14: Compensation disc (Order-nr. 27180000)\*
- 15: Socket spanner (Order-nr. 19070000)\*
- 16: Thermo-element for changed waterways (Order-nr. 47657000)\*

\* Optional accessories