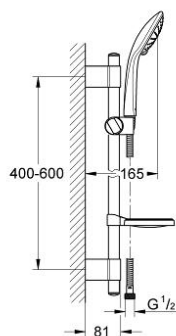


## 27 259 001 **EUPHORIA 110 DUO SHOWER RAIL SET 2 SPRAYS**

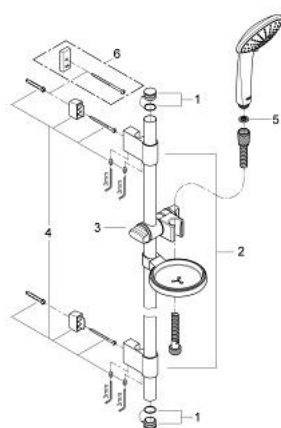


### PRODUCT DESCRIPTION

- Colour: chrome
- consisting of:
  - hand shower Duo (27 220 000)
  - shower rail, 600 mm
  - GROHE FastFixation Plus (adjustable distance between wall shower holders for adaption to existing drillings)
  - with wall holders made of metal
  - shower hose Relaxaflex 1750 mm 1/2" x 1/2" (28 154)
  - soap dish (27 206)
  - GROHE DreamSpray perfect spray pattern
  - GROHE SprayDimmer (stepless flow rate reduction)
  - GROHE CoolTouch
  - GROHE Long-Life finish
  - SpeedClean anti-limescale system



## 27 259 001 **EUPHORIA 110 DUO SHOWER RAIL SET 2 SPRAYS**



### **SPARE PARTS**, 9月 2009 – now

- 1: Cover cap (Order-nr. 45922000)
- 2: Shower rail holder (Order-nr. 0666700M)
- 3: Glide element (Order-nr. 65380000)
- 4: Fixing set (Order-nr. 45403000)
- 5: Dirt strainer (Order-nr. 0700200M)
- 6: Compensation disc (Order-nr. 45914XE0)\*

\* Optional accessories