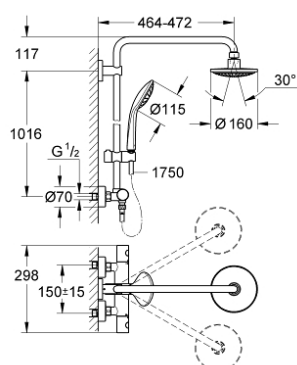


## 27 296 000 EUPHORIA SYSTEM 160 SHOWER SYSTEM WITH THERMOSTAT FOR WALL MOUNTING

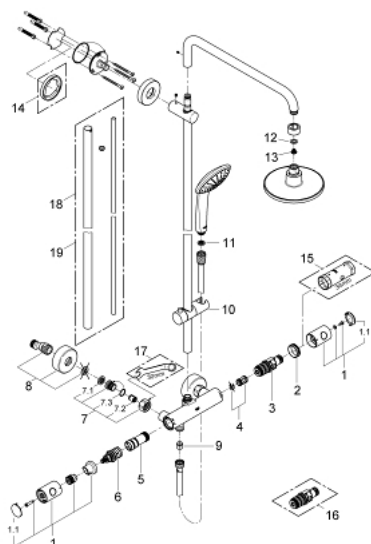


### PRODUCT DESCRIPTION

- Colour: chrome
- consists of:
  - Horizontal swivable 450 mm shower arm
  - exposed thermostat with Aquadimmer function
  - allows change between:
    - head shower Euphoria Cosmopolitan 160(28 232 000)
    - spray pattern: Rain
  - with ball joint
  - angle of rotation  $\pm 15^\circ$
  - hand shower Euphoria Mono (27 265 000)
  - adjustable in height with gliding element (12 140 000)
  - shower hose Silverflex 1750 mm 1/2" x 1/2" (28 388)
  - minimum flow rate 7 l/min.
  - GROHE DreamSpray perfect spray pattern
  - GROHE Long-Life finish
  - GROHE TurboStat compact cartridge with wax thermoelement
  - SpeedClean anti-lime system
  - suitable for instantaneous heaters (min. 19 kW/h)



## 27 296 000 EUPHORIA SYSTEM 160 SHOWER SYSTEM WITH THERMOSTAT FOR WALL MOUNTING



### SPARE PARTS, November 2008 – now

- 1: Handle (Order-nr. 47718000)
- 1.1: Cap (Order-nr. 6458500M)
- 2: Fitting ring (Order-nr. 47743000)
- 3: Thermostatic compact cartridge 1/2" (Order-nr. 47439000)
- 4: Sound absorber (Order-nr. 47398000)
- 5: Water flow (Order-nr. 47751000)
- 6: Aquadimmer (Order-nr. 12433000)
- 7: Non-return valve (Order-nr. 47189000)
- 7.1: Dirt Strainer (Order-nr. 0726400M)
- 7.2: Non-return valve (Order-nr. 08565000)
- 7.3: O-ring  $\varnothing 17 \times \varnothing 2$  (Order-nr. 0305500M)
- 8: S-union (Order-nr. 12662000)
- 9: Non-return valve (Order-nr. 08565000)
- 10: Sliding piece (Order-nr. 12140000)
- 11: Dirt strainer (Order-nr. 0700200M)
- 12: Fibre seal dia. 12x2 mm (Order-nr. 0138900M)
- 13: Dirt strainer (Order-nr. 0676800M)
- 14: Compensation disc (Order-nr. 27180000)\*
- 15: Socket spanner (Order-nr. 19332000)\*
- 16: GROHE TurboStat cartridge 1/2" (Order-nr. 47175000)\*
- 17: Special spanner (Order-nr. 19377000)\*
- 18: Shower system pipe for retrofitting (Order-nr. 48053000)\*
- 19: Shower system pipe for retrofitting (Order-nr. 48054000)\*
- \* Optional accessories