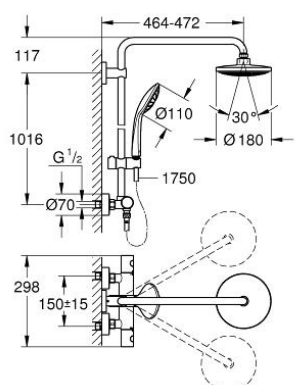
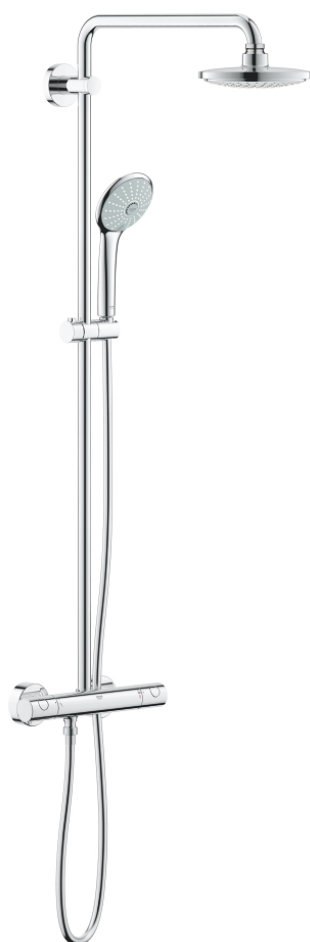


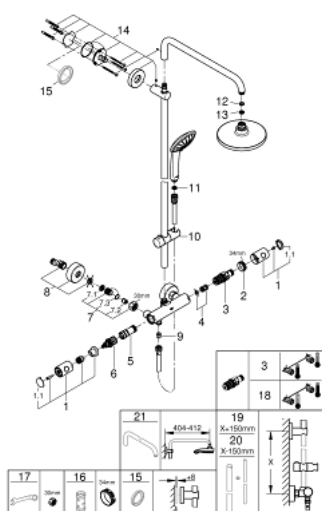
## 27 615 000 EUPHORIA SYSTEM 180 SHOWER SYSTEM WITH THERMOSTAT FOR WALL MOUNTING



### PRODUCT DESCRIPTION

- Colour: chrome
- consisting of:
  - horizontal swivable 450 mm shower arm
  - exposed thermostat with Aquadimmer function
  - allows change between:
    - head shower Euphoria Cosmopolitan (27 492 000)
    - spray pattern: Rain
    - with ball joint
    - rotation angle  $\pm 15^\circ$
  - hand shower Euphoria 110 Massage (27 239)
  - adjustable in height with gliding element
  - 9.5 l/min. flow limiter
  - Silverflex shower hose 1750 mm 1/2" x 1/2" (28 388)
  - minimum flow rate 7 l/min
  - GROHE Water Saving - Less water, perfect flow
  - GROHE DreamSpray perfect spray pattern
  - GROHE Long-Life finish
  - GROHE TurboStat compact cartridge with wax thermoelement
  - SpeedClean anti-limescale system
- suitable for instantaneous heaters from 18 kW/h
- optional upgrade: GROHE EasyReach tray (26 362), sold separately

## 27 615 000 EUPHORIA SYSTEM 180 SHOWER SYSTEM WITH THERMOSTAT FOR WALL MOUNTING



### SPARE PARTS, 7月 2017 – now

- 1: Metal handle 1/2" (Order-nr. 47984000)
- 1.1: Cover cap (Order-nr. 6458500M)
- 2: Fitting ring (Order-nr. 47743000)
- 3: Thermostatic compact cartridge 1/2" (Order-nr. 47439000)
- 4: Buffer (Order-nr. 47398000)
- 5: Water flow (Order-nr. 47751000)
- 6: Aquadimmer (Order-nr. 12433000)
- 7: Non-return valve (Order-nr. 47189000)
- 7.1: Dirt strainer (Order-nr. 0726400M)
- 7.2: Non-return valve (Order-nr. 08565000)
- 7.3: O-ring  $\varnothing 17 \times \varnothing 2$  (Order-nr. 0305500M)
- 8: S-union (Order-nr. 12662000)
- 9: Non-return valve (Order-nr. 08565000)
- 10: Glide element (Order-nr. 12140000)
- 11: Dirt strainer (Order-nr. 0700200M)
- 12: Fibre seal  $\varnothing 18,5 \times \varnothing 12 \times 2$  (Order-nr. 0138900M)
- 13: Dirt strainer (Order-nr. 48007000)
- 14: Shower rail holder (Order-nr. 48279000)
- 15: Compensation disc (Order-nr. 27180000)\*
- 16: Socket spanner (Order-nr. 19332000)\*
- 17: Special spanner (Order-nr. 19377000)\*
- 18: GROHE TurboStat cartridge 1/2" (Order-nr. 47175000)\*
- 19: Shower system pipe for retrofitting (Order-nr. 48053000)\*
- 20: Shower system pipe for retrofitting (Order-nr. 48054000)\*
- 21: Shower arm for shower systems (Order-nr. 14047000)\*

\* Optional accessories