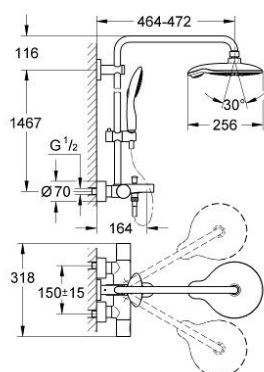


27 913 000 **POWER&SOUL SYSTEM 190 SHOWER SYSTEM WITH THERMOSTAT FOR WALL MOUNTING**

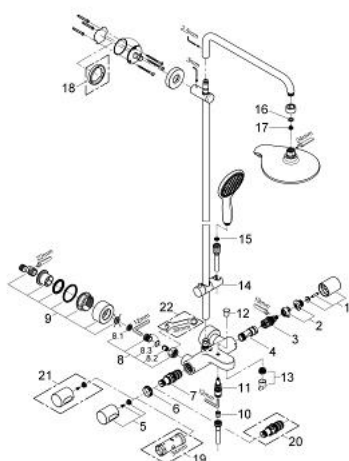


PRODUCT DESCRIPTION

- Colour: chrome
- consists of:
 - Horizontal swivable 450 mm shower arm
 - exposed bath thermostat with Aquadimmer function
 - allows change between:
 - Power&Soul head shower (27 766 000)
 - with ball joint
 - rotation angle $\pm 20^\circ$
 - bath spout
 - separate diverter for
 - hand shower Power&Soul 115 (27 669 000)
 - adjustable in height with gliding element (12 140 000)
 - shower hose Silverflex 1750 mm 1/2" x 1/2" (28 388)
 - minimum flow rate 7 l/min.
 - GROHE TurboStat compact cartridge with wax thermoelement
 - GROHE One-click showering Spray selection via push of a button
 - GROHE DreamSpray perfect spray pattern
 - GROHE Long-Life finish
 - GROHE CoolTouch no risk of scalding
 - SpeedClean anti-lime system
 - Inner WaterGuide for a longer life
- suitable for instantaneous heaters (min. 19 kW/h)



27 913 000 POWER&SOUL SYSTEM 190 SHOWER SYSTEM WITH THERMOSTAT FOR WALL MOUNTING



SPARE PARTS, October 2011 – now

- 1: Aquadimmer handle (Order-nr. 47804000)
- 2: Temperature limiter (Order-nr. 47723000)
- 3: Aquadimmer (Order-nr. 12433000)
- 4: Water flow (Order-nr. 47751000)
- 5: Handle (Order-nr. 47803000)
- 6: Fitting ring (Order-nr. 47743000)
- 7: Thermostatic compact cartridge 1/2" (Order-nr. 47439000)
- 8: Non-return valve (Order-nr. 47189000)
- 8.1: Dirt Strainer (Order-nr. 0726400M)
- 8.2: Non-return valve (Order-nr. 08565000)
- 8.3: O-ring $\varnothing 17 \times \varnothing 2$ (Order-nr. 0305500M)
- 9: S-union (Order-nr. 12693000)
- 10: Non-return valve (Order-nr. 08565000)
- 11: Diverter (Order-nr. 65655000)
- 12: Diverter knob (Order-nr. 65648000)
- 13: Mousseur (Order-nr. 13926000)
- 14: Sliding piece (Order-nr. 12140000)
- 15: Dirt strainer (Order-nr. 0700200M)
- 16: Fibre seal dia. 12x2 mm (Order-nr. 0138900M)
- 17: Dirt strainer (Order-nr. 0676800M)
- 18: Compensation disc (Order-nr. 27180000)*
- 19: Socket spanner (Order-nr. 19332000)*
- 20: GROHE TurboStat cartridge 1/2" (Order-nr. 47175000)*
- 21: Scale handle (Order-nr. 47811000)*
- 22: Special spanner (Order-nr. 19377000)*

* Optional accessories