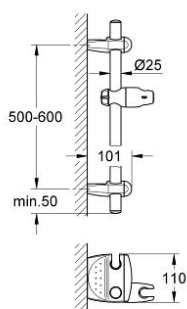


28 723 000 **MOVARIO SHOWER RAIL, 600 MM**

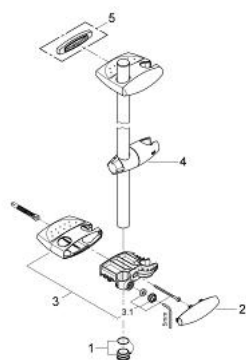


PRODUCT DESCRIPTION

- Colour: chrome
- wall mounted
- adjustable distance between wall shower holders for adaption to existing drillings
- glide element with swivel holder
- wall brackets with trays and integrated shower holder
- GROHE FastFixation Plus (adjustable distance between wall shower holders for adaption to existing drillings)
- GROHE Long-Life finish



28 723 000 **MOVARIO SHOWER RAIL, 600 MM**



SPARE PARTS, 2月 2005 – now

1: Cover cap (Order-nr. 45922000)

2: Cover plate (Order-nr. 11482000)

3: Bracket (Order-nr. 45923000)

3.1: Fixing set (Order-nr. 45924000)

4: Glide element (Order-nr. 12353000)

5: Compensation disc (Order-nr. 28407000)*

* Optional accessories