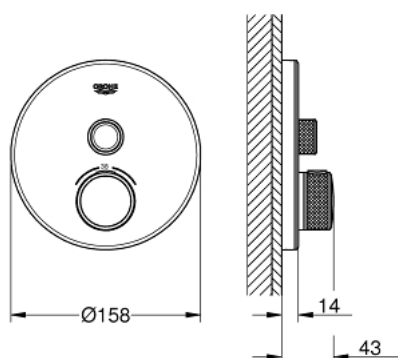


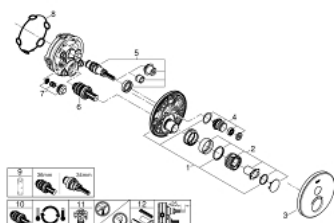
29 150 LS0 GROHTHERM SMARTCONTROL THERMOSTAT FOR CONCEALED INSTALLATION WITH ONE VALVE



PRODUCT DESCRIPTION

- Colour: moon white/chrome
- set for final installation for
- GROHE Rapido SmartBox (35 600/35 604)
- metal wall escutcheon with GROHE FastFixation (covered escutcheon and shaft sealing, covered fixing), retroactively 6° adjustable
- GROHE Long-Life finish
- GROHE SmartControl push for ON-OFF, turn for volume adjustment from GROHE Water Saving to Full Flow
- exchangeable symbols
- GROHE TurboStat compact cartridge with wax thermoelement
- GROHE ProGrip with knurl structure
- GROHE SafeStop safety button at 38°C
- GROHE SafeStop Plus optional temperature limiter at 43°C or 46°C included
- built-in non return valves and dirt strainers
- cover plate in moon white acrylic glass
- without roughing-in set
- flow performance: outlet A (to external shut-off) = 34 l/min, outlet B/C = 29 l/min

29 150 LS0 GROHTHERM SMARTCONTROL THERMOSTAT FOR CONCEALED INSTALLATION WITH ONE VALVE



SPARE PARTS, 6月 2018 – now

- 1: Mounting plate (Order-nr. 48362000)
- 2: Temperature control handle (Order-nr. 49029000)
- 2.1: Cover cap (Order-nr. 1015030000)
- 2.2: handle adaptor (Order-nr. 1015059990)
- 3: Escutcheon (Order-nr. 49031LS0)
- 4: Push button (Order-nr. 48361000)
- 4.1: pushbutton (Order-nr. 14077000)
- 5: Cartridge (Order-nr. 48359000)
- 5.1: Spindle (Order-nr. 49088000)
- 6: Thermostatic compact cartridge 3/4" (Order-nr. 49028000)
- 7: Non-return valve (Order-nr. 49085000)
- 8: Seal (Order-nr. 48360000)
- 9: Socket spanner (Order-nr. 49059000)*
- 10: GROHE TurboStat cartridge 3/4" (Order-nr. 49003000)*
- 11: Service stops (Order-nr. 1405300M)*
- 12: Universal extension set single-lever mixers, 25 mm (Order-nr. 14048000)*

* Optional accessories