

30 311 000 ESSENCE FOOT CONTROL ELECTRONIC SINGLE-LEVER SINK MIXER 1/2"

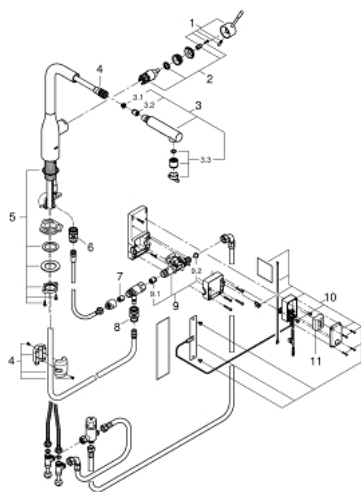


PRODUCT DESCRIPTION

- Colour: chrome
- L-spout
- Foot control: activation of water via contact with sensor
- battery supply 6 V lithium-battery, type CR-P2
- CE approved
- solenoid valve
- fixed value mixing valve
- automatic safety stop after 60 sec. (factory set)
- type of protection IP 44
- GROHE SilkMove 28 mm ceramic cartridge
- flow straightener
- pull-out dual spray - switches back and forth between regular flow and spray
- diverter: laminar spray/SpeedClean shower jet
- automatic return to laminar spray
- swivel tubular spout
- swivel area 360°
- protected against backflow
- flexible connection hoses
- rapid installation system



30 311 000 ESSENCE FOOT CONTROL ELECTRONIC SINGLE-LEVER SINK MIXER 1/2"



SPARE PARTS, 2月 2018 – now

- 1: Lever (Order-nr. 46927000)
- 2: Cartridge (Order-nr. 46580000)
- 3: Pull out spray (Order-nr. 46926000)
- 3.1: Dirt strainer (Order-nr. 0676800M)
- 3.2: Non-return valve (Order-nr. 08565000)
- 3.3: Flow straightener (Order-nr. 48275000)
- 4: Shower hose (Order-nr. 48293000)
- 5: Shank fastening assembly (Order-nr. 48384000)
- 7: Non-return valve (Order-nr. 08565000)
- 8: Quick coupling (Order-nr. 46338000)
- 9: Solenoid valve (Order-nr. 48213000)
- 9.1: Non-return valve (Order-nr. 08565000)
- 9.2: Dirt strainer (Order-nr. 42395000)
- 10: Control unit (Order-nr. 48304000)
- 11: Battery (Order-nr. 42886000)