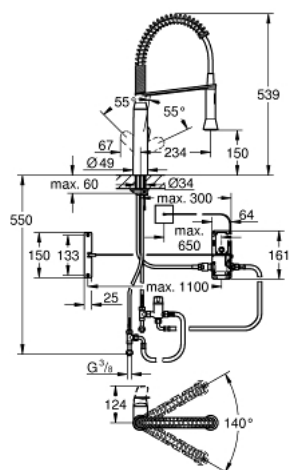


30 312 000 K7 FOOT CONTROL ELECTRONIC SINGLE-LEVER SINK MIXER 1/2"

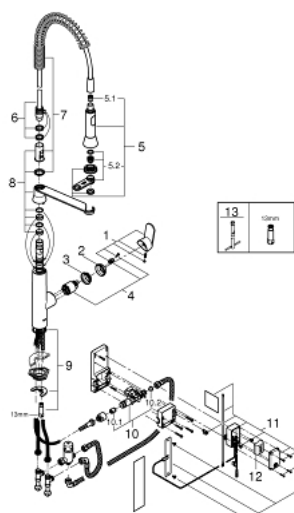


PRODUCT DESCRIPTION

- Colour: chrome
- medium spout
- Foot control: activation of water via contact with sensor
- battery supply 6 V lithium-battery, type CR-P2
- CE approved
- solenoid valve
- fixed value mixing valve
- automatic safety stop after 60 sec. (factory set)
- type of protection IP 44
- GROHE SilkMove 35 mm ceramic cartridge
- professional spray
- diverter: mousseur/SpeedClean shower jet
- automatic return to mousseur
- adjustable flow rate limiter
- swivel tubular spout
- swivel area 360°
- protected against backflow
- flexible connection hoses
- rapid installation system



30 312 000 K7 FOOT CONTROL ELECTRONIC SINGLE-LEVER SINK MIXER 1/2"



SPARE PARTS, 7月 2015 – now

- 1: Lever (Order-nr. 46927000)
- 2: Cap (Order-nr. 46116000)
- 3: Screw coupling (Order-nr. 46460000)
- 4: Cartridge (Order-nr. 46374000)
- 5: Pull out spray (Order-nr. 46731000)
- 5.1: Non-return valve (Order-nr. 08565000)
- 5.2: Mousseur (Order-nr. 46711000)
- 6: Shower hose (Order-nr. 46871000)
- 7: Spring (Order-nr. 46873SD0)
- 8: Holder pull out spray (Order-nr. 46734000)
- 9: Shank mounting kit (Order-nr. 46671000)
- 10: Solenoid valve (Order-nr. 48213000)
- 10.1: Non-return valve (Order-nr. 08565000)
- 10.2: Dirt strainer (Order-nr. 42395000)
- 11: Control unit (Order-nr. 48304000)
- 12: Battery (Order-nr. 42886000)
- 13: Mounting wrench (Order-nr. 19017000)*

* Optional accessories