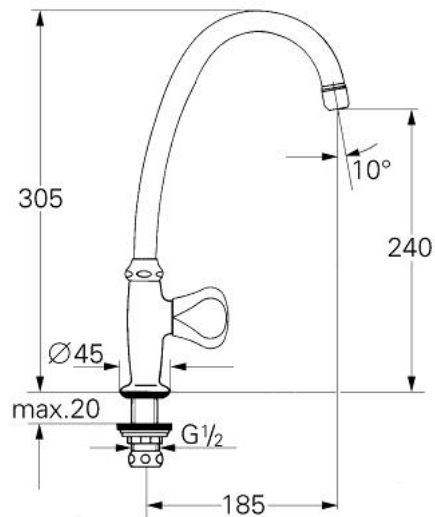


30 834 000 **ATLANTA PILLAR TAP 1/2"**

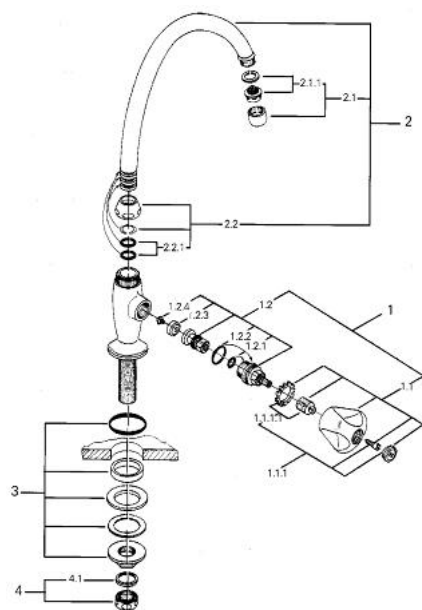


PRODUCT DESCRIPTION

- Colour: chrome
- Treflor handle
- marking: blue/red
- swivel tubular spout
- mousseur
- union nut with 10.5 mm drilling
- GROHE Long-Life finish



30 834 000 ATLANTA PILLAR TAP 1/2"



SPARE PARTS, 1月 1981 – now

- 1: Headpart 1/2" (Order-nr. 11086000)
- 1.1: Treflor handle 1/2" (Order-nr. 45124000)
 - 1.1.1: Handle fixation (Order-nr. 45123000)
 - 1.1.1.1: Snap insert (Order-nr. 0538600M)
- 1.2: Headpart 1/2" (Order-nr. 07146000)
 - 1.2.1: Sealing washer Ø 6 x Ø 2 (Order-nr. 0128300M)
 - 1.2.2: O-ring Ø 18.2 x Ø 1.7 (Order-nr. 0392400M)
 - 1.2.3: Seal (Order-nr. 0529100M)
- 2: Tubular spout (Order-nr. 13070000)
 - 2.1: Mousseur (Order-nr. 13928000)
 - 2.1.1: Replacement flow control M22x1 and M24x1 (Order-nr. 45002000)
 - 2.2: Replacement kit for tube spout fastening until ' 94 (Order-nr. 45006000)
 - 2.2.1: Sealing washer (Order-nr. 0128500M)
 - 2.2.2: Replacement kit for tube spout fastening from ' 95 (Order-nr. 45499000)
 - 2.2.1: Sealing washer (Order-nr. 0128500M)
- 3: Shank fastening assembly 1/2" (Order-nr. 45000000)
- 4: Coupling nut 1/2" (Order-nr. 1290100M)
 - 4.1: Fibre seal Ø 18,5 x Ø 12 x 2 (Order-nr. 0138900M)