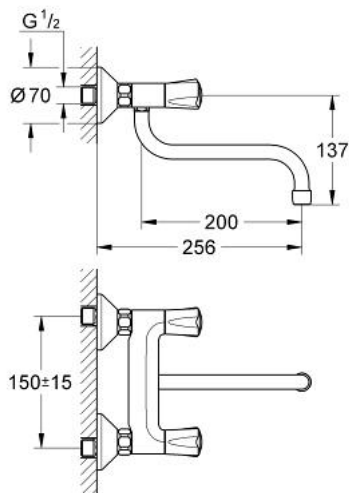


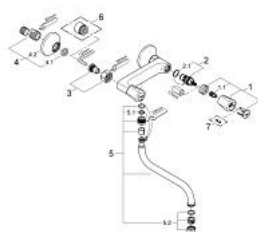
31 066 000 **AVINA TWO HANDLE SINK MIXER**



**PRODUCT DESCRIPTION**

- Colour: chrome
- wall mounted
- metal handles
- heat insulated
- screwable
- Carbodur ceramic headpart 1/2", 180°
- projection 200 mm
- swivel spout
- S-unions
- mousseur
- GROHE Long-Life finish

## 31 066 000 AVINA TWO HANDLE SINK MIXER



### SPARE PARTS, 6月 2007 – now

- 1: Handle Atlanta (Order-nr. 45993000)
  - 1.1: Snap insert (Order-nr. 0538600M)
  - 2: Ceramic headpart 1/2" (Order-nr. 45346000)
  - 2.1: O-ring Ø 18.2 x Ø 1.7 (Order-nr. 0392400M)
  - 3: Screw connection (Order-nr. 45544000)
  - 4: S-union (Order-nr. 12075000)
  - 4.1: Seal (Order-nr. 0138600M)
  - 4.2: Escutcheon (Order-nr. 0221000M)
  - 5: Tubular spout (Order-nr. 13051000)
  - 5.1: O-ring Ø 12 x Ø 2 (Order-nr. 0128000M)
  - 5.2: Mousseur (Order-nr. 13928000)
  - 6: Extension 3/4", 20 mm (Order-nr. 0713000M)\*
  - 7: Screw for Costa/Avina products (Order-nr. 48013000)\*
- \* Optional accessories