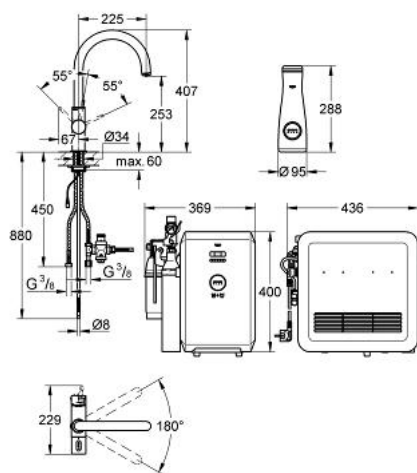


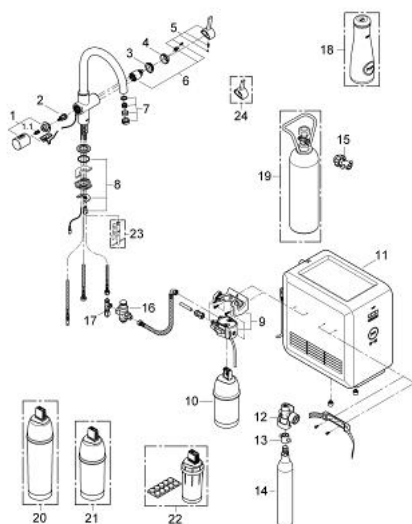
## 31 323 DC0 GROHE BLUE PROFESSIONAL STARTER KIT



### PRODUCT DESCRIPTION

- Colour: Supersteel
- consists of:
- Single-lever sink mixer with filter function
- single hole installation
- C-spout
- separate handle for 3 types of filtered and chilled table water
- still, medium, fizzy
- headpart 1/2"
- GROHE SilkMove 35 mm ceramic cartridge
- adjustable flow rate limiter
- GROHE Long-Life finish
- swivelling tubular spout
- swivel area 180°
- separate inner water ways
- flexible connection hoses
- type of protection IP 55
- CE approved
- Main switching power supply 100 - 240 V AC 50/60 Hz with safety extra-low voltage (SELV) 6 V DC to filter change display unit
- adjustable for 600 litre, 1500 litre or 3000 litre filter cartridges
- GROHE Blue chiller and carbonizer
- GROHE Blue 600 l filter
- 230 V
- GROHE Blue size S filter, filter head with flexible adjustment
- GROHE Blue 425 g CO<sub>2</sub>-carbonization bottle
- GROHE Blue carafe
- noise classification 1 in accordance with DIN4109
- replaces 31 079 000
- minimum pressure 1,0 bar

## 31 323 DC0 GROHE BLUE PROFESSIONAL STARTER KIT



### SPARE PARTS, August 2012 – now

- 1: Handle (Order-nr. 46652DC0)
- 1.1: Repl. kit f.handle fastening (Order-nr. 0538600M)
- 2: Headpart (Order-nr. 46713000)
- 3: Screw coupling (Order-nr. 46460000)
- 4: Shield (Order-nr. 46116DC0)
- 5: Lever (Order-nr. 46653DC0)
- 6: Cartridge (Order-nr. 46374000)
- 7: Mousseur (Order-nr. 64374DC0)
- 8: Shank mounting kit (Order-nr. 46249000)
- 9: filter head (Order-nr. 64508000)
- 10: Filter (Order-nr. 40404000)
- 11: Chiller and carbonizer (Order-nr. 40554000)
- 12: Pressure indicator (Order-nr. 46717000)
- 12.1: CO<sub>2</sub> adapter (Order-nr. 40962000)
- 13: Adapter 3/4" x 1/2" (Order-nr. 40453000)
- 14: Starter kit 425 g CO<sub>2</sub> bottles (4 pieces) (Order-nr. 40422000)
- 15: Adapter 3/4" x 1/2" (Order-nr. 40454000)
- 16: Pressure reducing valve (Order-nr. 40452000)
- 17: Original WAS T-piece 3/8" (Order-nr. 41007000)
- 18: Glass carafe (Order-nr. 40405000)\*
- 19: Starter kit 2 kg CO<sub>2</sub> bottle (Order-nr. 40423000)\*
- 20: Filter (Order-nr. 40412000)\*
- 21: Filter (Order-nr. 40430000)\*
- 22: Cleaning cartridge (Order-nr. 40434000)\*
- 23: Mounting wrench (Order-nr. 19017000)\*
- 24: Shorter mixed water lever (Order-nr. 40621DC0)\*

\* Optional accessories