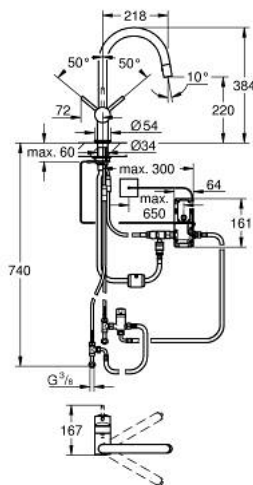


31 358 001 MINTA TOUCH ELECTRONIC SINGLE-LEVER SINK MIXER 1/2"

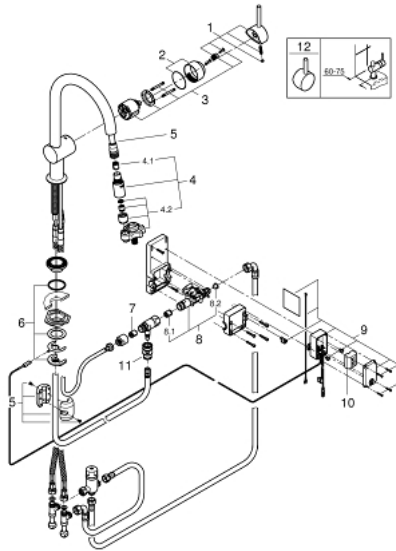


PRODUCT DESCRIPTION

- Colour: chrome
- C-spout
- Touch: activation of water via skin contact
- battery power supply 6 V, lithium-battery, type CR-P2
- CE approved
- solenoid valve
- fixed value mixing valve
- automatic safety stop 60 sec. (factory pre-set)
- type of protection IP 44
- GROHE SilkMove 46 mm ceramic cartridge
- flow strainer
- Pull-Out spout for greater flexibility
- diverter: laminar spray/SpeedClean shower jet
- automatic return to laminar spray
- swivel tubular spout, swivel area 360°
- Protected against backflow
- flexible connection hoses
- rapid-installation-system



31 358 001 MINTA TOUCH ELECTRONIC SINGLE-LEVER SINK MIXER 1/2"



SPARE PARTS, May 2015 – now

- 1: Lever (Spare part-nr. 46015000)
 - 2: Shield (Spare part-nr. 46025000)
 - 3: Cartridge (Spare part-nr. 46048000)
 - 4: Pull-Out spray (Spare part-nr. 46857000)
 - 4.1: Non-return valve (Spare part-nr. 08565000)
 - 4.2: Flow straightener (Spare part-nr. 13997000)
 - 5: Hose for sink mixer with pull-out dual spray or mousseur (Spare part-nr. 48293000)
 - 6: Shank mounting kit (Spare part-nr. 46345000)
 - 7: Non-return valve (Spare part-nr. 08565000)
 - 8: Solenoid valve (Spare part-nr. 48213000)
 - 8.1: Non-return valve (Spare part-nr. 08565000)
 - 8.2: Dirt strainer (Spare part-nr. 42395000)
 - 9: Control unit (Spare part-nr. 48214000)
 - 10: Battery (Spare part-nr. 42886000)
 - 11: Snap coupling (Spare part-nr. 46338000)
 - 12: Lever (Spare part-nr. 40684000)*
- * Optional accessories