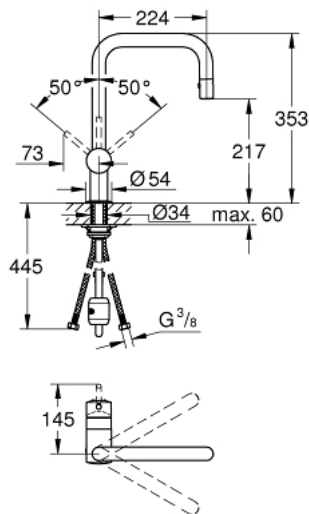


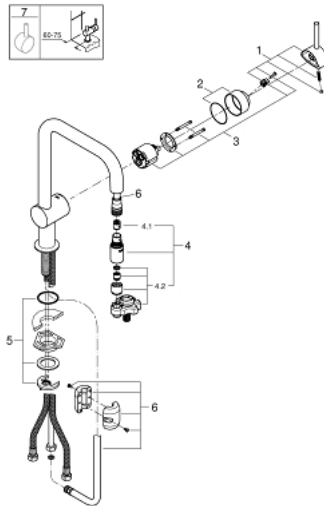
## 32 322 DC0 MINTA SINGLE-LEVER SINK MIXER 1/2"



### PRODUCT DESCRIPTION

- Colour: Supersteel
- U spout
- single hole installation
- GROHE Long-Life finish
- GROHE SilkMove 46 mm ceramic cartridge
- flow strainer
- pull-out laminar spray
- diverter: laminar spray/SpeedClean shower jet
- automatic return to laminar spray
- adjustable flow rate limiter
- swivelling tubular spout
- selectable swivel area : 0° / 150° / 360°
- integrated non-return valve
- Protected against backflow
- flexible connection hoses
- rapid-installation-system
- minimum pressure 1,0 bar

## 32 322 DC0 MINTA SINGLE-LEVER SINK MIXER 1/2"



### SPARE PARTS, December 2015 – now

1: Lever (Order-nr. 46015DC0)

2: Shield (Order-nr. 46025DC0)

3: Cartridge (Order-nr. 46048000)

4: Hand shower (Order-nr. 46857DC0)

4.1: Non-return valve (Order-nr. 08565000)

4.2: Flow straightener (Order-nr. 13997000)

5: Shank mounting kit (Order-nr. 46345000)

6: Hose for sink mixer with pull-out dual spray or mousseur (Order-nr. 48293000)

7: Lever (Order-nr. 40684DC0)\*

\* Optional accessories