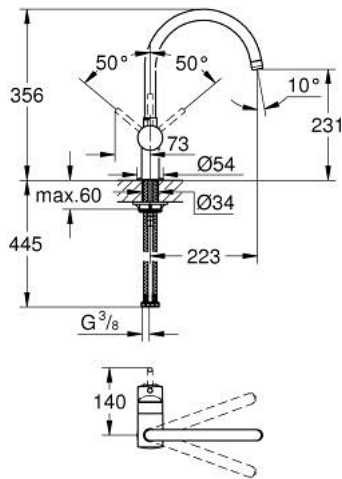


32 917 DC0 MINTA SINGLE-LEVER SINK MIXER 1/2"

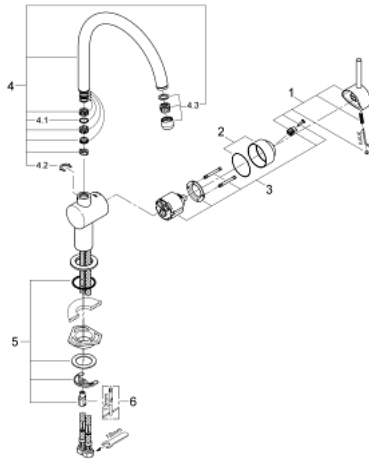


PRODUCT DESCRIPTION

- Colour: Supersteel
- C-spout
- single hole installation
- GROHE Long-Life finish
- GROHE SilkMove 46 mm ceramic cartridge
- adjustable flow rate limiter
- swivelling tubular spout
- selectable swivel area : 0° / 150° / 360°
- flexible connection hoses
- compression nut 3/8"
- rapid-installation-system
- optional temperature limiter ref. no. 46 308
- maximum flow rate (at 3 bar): 11.5 l/min



32 917 DC0 **MINTA SINGLE-LEVER SINK MIXER 1/2"**



SPARE PARTS, March 2004 – now

- 1: Lever (Order-nr. 46015DC0)
- 2: Shield (Order-nr. 46025DC0)
- 3: Cartridge (Order-nr. 46048000)
- 4: C-spout (Order-nr. 13043DC0)
- 4.1: Sealing washer (Order-nr. 0128500M)
- 4.2: Safety ring (Order-nr. 0485300M)
- 4.3: Mousseur (Order-nr. 13928DC0)
- 5: Shank mounting kit (Order-nr. 46249000)
- 6: Mounting wrench (Order-nr. 19017000)*

* Optional accessories