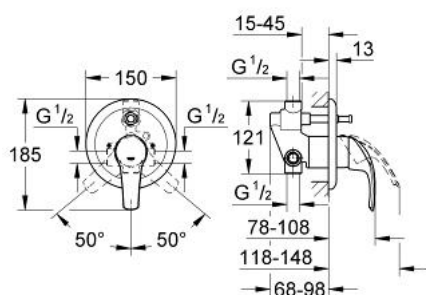


## 33 305 001 EUROSMART SINGLE-LEVER BATH/SHOWER MIXER

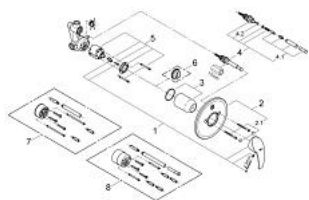


### PRODUCT DESCRIPTION

- Colour: chrome
- wall installation
- consists of:
  - final installation set (19 450 001)
  - concealed body(33 963)
  - GROHE SilkMove 46 mm ceramic cartridge
  - GROHE Long-Life finish
  - adjustable flow rate limiter
  - adjustable minimum flow rate approx. 2.5 l/min
  - automatic diverter: bath/shower
  - metal lever
  - metal wall escutcheon
  - screwed
  - optional temperature limiter ref. no. 46 308



## 33 305 001 EUROSMART SINGLE-LEVER BATH/SHOWER MIXER



### SPARE PARTS, November 2007 – now

- 1: Lever (Order-nr. 46561000)
- 2: Escutcheon (Order-nr. 46468000)
- 2.1: Set of screws (Order-nr. 46088000)
- 3: Shield (Order-nr. 02693000)
- 4: Diverter (Order-nr. 46058000)
- 4.1: Diverter knob (Order-nr. 46008000)
- 4.2: O-ring  $\varnothing 6 \times \varnothing 2$  (Order-nr. 0128300M)
- 5: Cartridge (Order-nr. 46048000)
- 5.1: Repl. kit f. seal (Order-nr. 46209000)
- 6: Temperature limiter (Order-nr. 46308000)\*
- 7: Extension set (Order-nr. 46191000)\*
- 8: Extension set (Order-nr. 46343000)\*

\* Optional accessories