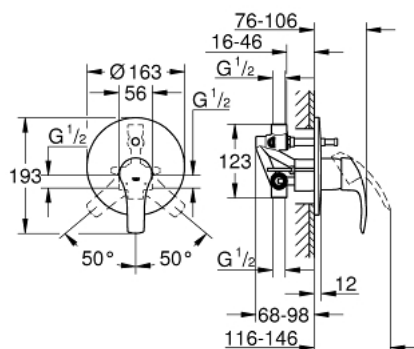


33 305 002 EUROSMART SINGLE-LEVER BATH/SHOWER MIXER



PRODUCT DESCRIPTION

- Colour: chrome
- wall installation
- GROHE SilkMove 46 mm ceramic cartridge
- GROHE Long-Life finish
- GROHE FastFixation covered fixation
- consists of:
- set for final installation (19 450 002)
- with concealed body
- adjustable flow rate limiter
- automatic diverter: bath/shower
- metal lever
- metal escutcheon
- escutcheon- and shaft-sealing
- optional temperature limiter ref. no. 46 308



33 305 002 EUROSMART SINGLE-LEVER BATH/SHOWER MIXER



SPARE PARTS, October 2013 – now

- 1: Lever (Order-nr. 46903000)
- 2: Escutcheon (Order-nr. 46905000)
- 3: Cartridge (Order-nr. 46048000)
- 4: Diverter (Order-nr. 46737000)
- 5: Temperature limiter (Order-nr. 46308000)*
- 6: Extension set (Order-nr. 46191000)*
- 7: Extension set (Order-nr. 46343000)*

* Optional accessories