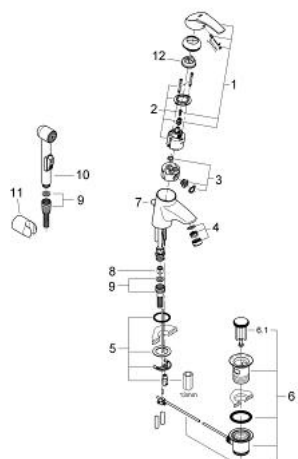


**S-SIZE**



- Colour: chrome
- single hole installation
- metal lever
- GROHE SilkMove 46 mm ceramic cartridge
- GROHE Long-Life finish
- adjustable flow rate limiter
- adjustable minimum flow rate approx. 2.5 l/min
- mousseur
- pop-up waste set 1 1/4"
- rapid installation system
- with shower set
- consisting of:
- hand shower with integrated diverter
- wall shower holder
- shower hose
- optional temperature limiter ref. no. 46 375

## 33 446 001 EUROSMART HYGIENICA SINGLE-LEVER BASIN MIXER 1/2" S-SIZE



### SPARE PARTS, 6月 2005 – now

- 1: Lever (Order-nr. 46561000)
- 2: Cartridge (Order-nr. 46048000)
- 3: Diverter (Order-nr. 46466000)
- 4: Mousseur (Order-nr. 13929000)
- 4: Shank mounting kit (Order-nr. 46447000)
- 5: Shank mounting kit (Order-nr. 46249000)
- 6: Waste fitting (Order-nr. 28915000)
- 6.1: Plug (Order-nr. 45210000)
- 7: Pop-up rod (Order-nr. 06329000)
- 8: Non-return valve (Order-nr. 08565000)
- 9: Shower hose (Order-nr. 28151000)
- 10: Hand shower 1 spray (Order-nr. 28343000)
- 11: Wall hand shower holder (Order-nr. 28605000)
- 11: Temperature limiter (Order-nr. 46375000)\*
- 12: Temperature limiter (Order-nr. 46375000)

\* Optional accessories